



Administration Office
503/645-6433
Fax 503/629-6301

**Board of Directors Regular Meeting
April 13, 2015
6:30 pm Executive Session; 7 pm Regular Meeting
HMT Recreation Complex, Peg Ogilbee Dryland Meeting Room
15707 SW Walker Road, Beaverton**

AGENDA

1. Executive Session*
 - A. Land
2. Call Regular Meeting to Order
3. Action Resulting from Executive Session
4. Audience Time**
5. Board Time
6. Consent Agenda***
 - A. [Approve: Minutes of March 2, 2015 Regular Board Meeting](#)
 - B. [Approve: Monthly Bills](#)
 - C. [Approve: Monthly Financial Statement](#)
 - D. [Approve: National Water Safety Month Proclamation](#)
 - E. [Approve: Resolution Reappointing Natural Resources Advisory Committee Members](#)
7. Unfinished Business
 - A. [Review: Parks Functional Plan](#)
 - B. [Information: General Manager's Report](#)
8. New Business
 - A. [Approve: Resolution Appointing Parks Bond Citizen Oversight Committee Members](#)
9. Adjourn

Executive Session:** Executive Sessions are permitted under the authority of ORS 192.660. Copies of the statute are available at the offices of Tualatin Hills Park & Recreation District. *Public Comment/Audience Time:** If you wish to be heard on an item not on the agenda, or a Consent Agenda item, you may be heard under Audience Time with a 3-minute time limit. If you wish to speak on an agenda item, also with a 3-minute time limit, please wait until it is before the Board. Note: Agenda items may not be considered in the order listed. *****Consent Agenda:** If you wish to speak on an agenda item on the Consent Agenda, you may be heard under Audience Time. Consent Agenda items will be approved without discussion unless there is a request to discuss a particular Consent Agenda item. The issue separately discussed will be voted on separately. In compliance with the Americans with Disabilities Act (ADA), this material, in an alternate format, or special accommodations for the meeting, will be made available by calling 503-645-6433 at least 48 hours prior to the meeting.



MEMO

DATE: April 2, 2015
TO: Board of Directors
FROM: Doug Menke, General Manager

RE: Information Regarding the April 13, 2015 Board of Directors Meeting

Agenda Item #6 – Consent Agenda

Attached please find consent agenda items #6A-E for your review and approval.

Action Requested: **Approve Consent Agenda Items #6A-E as submitted:**
A. [Approve: Minutes of March 2, 2015 Board Meeting](#)
B. [Approve: Monthly Bills](#)
C. [Approve: Monthly Financial Statement](#)
D. [Approve: National Water Safety Month Proclamation](#)
E. [Approve: Resolution Reappointing Natural Resources Advisory Committee Members](#)

Agenda Item #7 – Unfinished Business

A. [Parks Functional Plan](#)

Attached please find a memo reporting that the draft Parks Functional Plan will be presented to the board for review. Aisha Panas, director of Park & Recreation Services, will be at your meeting to present highlights of the plan and to answer any questions the board may have.

Action Requested: **No formal action is requested. Staff is seeking board of director's review and input of the Parks Functional Plan. Board approval of the final document will be requested at the June 8, 2014 regular board meeting.**

B. [General Manager's Report](#)

Attached please find the General Manager's Report for the April regular board meeting.

Agenda Item #8 – New Business

A. [Resolution Appointing Parks Bond Citizen Oversight Committee Members](#)

Attached please find a memo requesting board discussion regarding the applications received to serve on the district's Parks Bond Citizen Oversight Committee and consideration of appointment of up to six of those applicants to the committee, each for a term of two years.

Action Requested: **Board of directors approval of Resolution 2015-09 Appointing Parks Bond Citizen Oversight Committee Members.**

Other Packet Enclosures

- [Management Report to the Board](#)
- [Monthly Capital Report](#)
- [Monthly Bond Capital Report](#)
- [System Development Charge Report](#)
- [Newspaper Articles](#)



**Tualatin Hills Park & Recreation District
Minutes of a Regular Meeting of the Board of Directors**

A regular meeting of the Tualatin Hills Park & Recreation District Board of Directors was held on Monday, March 2, 2015, at the HMT Recreation Complex, Dryland Training Center, 15707 SW Walker Road, Beaverton. Executive Session 6 pm; Regular Meeting 7 pm.

Present:

John Griffiths	President/Director
Bob Scott	Secretary/Director
Jerry Jones Jr.	Secretary Pro-Tempore/Director
Joseph Blowers	Director
Larry Pelatt	Director
Doug Menke	General Manager

Agenda Item #1 – Executive Session (A) Land

President Griffiths called executive session to order to conduct deliberations with persons designated by the governing body to negotiate real property transactions. Executive session is held pursuant to ORS 192.660(2)(e), which allows the board to meet in executive session to discuss the aforementioned issue.

President Griffiths noted that representatives of the news media and designated staff may attend the executive session. All other members of the audience were asked to leave the room. Representatives of the news media were specifically directed not to disclose information discussed during executive session. No final action or final decision may be made in executive session. At the end of executive session, the board will return to open session and welcome the audience back into the room.

Agenda Item #2 – Call Regular Meeting to Order

President Griffiths called the regular meeting to order at 7 pm.

Agenda Item #3 – Action Resulting from Executive Session

Bob Scott moved that the board of directors authorize staff to acquire one property in the southwest quadrant of the district for a community park site, using bond funds designated for acquisition of community park land, subject to appropriate due diligence review and approval by the general manager. Larry Pelatt seconded the motion. Roll call proceeded as follows:

Joe Blowers	Yes
Jerry Jones Jr.	Yes
Larry Pelatt	Yes
Bob Scott	Yes
John Griffiths	Yes

The motion was UNANIMOUSLY APPROVED.

Jerry Jones Jr. moved that the board of directors authorize staff to authorize the expansion of an existing easement in the southwest quadrant of the district, subject to appropriate due diligence review and approval by the general manager. Larry Pelatt seconded the motion. Roll call proceeded as follows:

Bob Scott	Yes
Joe Blowers	Yes
Larry Pelatt	Yes
Jerry Jones Jr.	Yes
John Griffiths	Yes

The motion was UNANIMOUSLY APPROVED.

Joe Blowers moved that the board of directors authorize staff to accept the donation of easements on two tracts in the northwest quadrant of the district for trail and linear park uses, subject to appropriate due diligence review and approval by the general manager.

Bob Scott seconded the motion. Roll call proceeded as follows:

Larry Pelatt	Yes
Jerry Jones Jr.	Yes
Bob Scott	Yes
Joe Blowers	Yes
John Griffiths	Yes

The motion was UNANIMOUSLY APPROVED.

Agenda Item #4 – Public Hearing: Request for Exemption from Competitive Bidding Process for Synthetic Turf

A. Open Hearing

President Griffiths opened the public hearing, with the board of directors acting as the Local Contract Review Board, to consider a request for exemption from the competitive bidding process for synthetic turf.

B. Staff Report

Mark Hokkanen, Risk & Contract manager, and Gery Keck, facilities & project manager, provided an overview of the memo included within the board of directors' information packet, noting that staff is requesting board approval of an exemption from the public bidding process for the selection of a synthetic turf product in accordance with the State of Oregon competitive bidding exemption process. If the board approves the exemption, staff will prepare a Request for Proposals (RFP) for competitive solicitation for this contract. Although the exemption would permit the district to directly solicit proposals from qualified suppliers of synthetic turf, staff intends to go through a public solicitation process. The exemption would permit the district to consider and review proposals based on qualitative criteria in addition to the price offered by a proposer. Staff is also requesting that the board adopt the after-the-fact evaluations in Exhibit A included within the board of directors' information packet comparing the actual results to the findings in the original exemption of the public improvement projects for the installation of the synthetic turf field at HMT Recreation Complex Field #1. Lastly, staff is requesting that the board authorize the supplier selected out of the RFP process to be specified in future construction contracts to install the synthetic turf product at district facilities. As a side note, within the RFP process, staff will be pursuing opportunities to substitute the crumb rubber infill material. Staff will evaluate the use of traditional crumb rubber systems along with alternative sources of crumb rubber, including owner provided. The review will include, but is not limited to, the safety, sustainability, warranty, and procurement of this infill material. Mark and Gery offered to answer any questions the board may have.

Jerry Jones Jr. expressed concern regarding the use of crumb rubber infill for the district's synthetic turf fields, alluding to recent research that suggests crumb rubber infill may have an associated health risk to synthetic turf users, and commented that the board has a responsibility to ensure that the district is using the proper product. He requested that as the sole source contract is developed and negotiated with the vendor, that language be included to notify the board regarding what type of infill the vendor is suggesting to be used.

- ✓ Larry Pelatt stated that this type of request should be covered within the solicitation process, but he questions whether the board should mandate the type of infill used, noting that this is an issue that staff should decide, not the board.

Jerry replied that he is not suggesting that a mandate be issued, but that the board is kept informed as to what type of infill will be used.

- ✓ General Manager Doug Menke suggested that district staff ensure that the sole source vendor agreement provides the following pricing options: standard crumb rubber infill; cryogenic infill; and owner-provided infill. Staff could then return to the board to provide the findings on the pricing for the various types of infill and a recommendation.
- ✓ Gery stated that this provision could be included in the solicitation and the agreement.
- ✓ Doug continued that district staff would then return to the board before entering into a formal agreement for any specific synthetic turf field in order to share with the board what the district's findings were and what type of infill would be used.

C. Public Comment

There was no testimony during public comment.

D. Board Discussion

There was no board discussion.

E. Close Hearing

President Griffiths closed the public hearing and opened the floor for a motion.

F. Board Action

Joe Blowers moved that the board of directors, acting as the Local Contract Review Board, approve the following actions: 1.) Adopt the after-the-fact evaluation comparing the actual results to the findings in the original exemption of the public improvement projects for the installation of the synthetic turf field HMT Recreation Complex Field #1; 2.) Approve the findings to exempt from competitive bidding the selection and installation of a synthetic turf product for upcoming projects within the next five years, in accordance with the State of Oregon competitive bidding exemption provisions outlined in ORS 279C.335; 3.) Approve the resulting supplier selected from the RFP process to be exclusively included as the supplier in future synthetic turf product construction contracts at district facilities; and 4.) Authorize the general manager or his designee to negotiate and execute an agreement with the selected synthetic turf supplier. Larry Pelatt seconded the motion. Roll call proceeded as follows:

Jerry Jones Jr.	Yes
Bob Scott	Yes
Larry Pelatt	Yes
Joe Blowers	Yes
John Griffiths	Yes

The motion was UNANIMOUSLY APPROVED.

Agenda Item #5 – Audience Time

Earl Egan, 9015 SW Jameson Road, Portland, is before the board of directors this evening regarding the district's recent price increase for the 20-punch pass for fitness and aquatic

programs. He stated that the pass recently suffered a price increase of 34% and offered a list of reasons why such an increase is unwarranted, which included: the district's most recent budget document reflects that these programs are meeting their budgets; the price charged for the pass before the increase should have more than covered the class instructors' wages; a 34% price increase is much more than the current CPI; and, his social security was increased only by 1.7% for the past few years, whereas the General Manager's office has received a 4% increase. He suggested that the district implement a 5% price increase at most for the pass, noting that the current price increase is especially difficult for seniors on fixed incomes.

- ✓ General Manager Doug Menke explained that this particular program, the 20-punch pass, was not priced appropriately many years ago, which is why such a dramatic cost increase was assessed in attempting to increase it to the appropriate cost recovery rate.
- ✓ Keith Hobson, director of Business & Facilities, provided a brief overview of the costs taken into consideration when identifying cost recovery targets, noting that the instructor's wage is only a small portion of the overall costs for a program. Another contributing factor to the price increase for the 20-punch pass is the phasing out of double discounts. In this case, the previous rate included a discount for purchasing a number of classes in bulk via the 20-punch pass, as well as the senior discount.
- ✓ Doug clarified that the district does not have a recreation facility that makes money purely by a business definition. By design, the facilities are in part supported by tax revenue. The choice the district made via the Comprehensive Plan was to consider cost recovery based on the programs' direct benefit to patrons.
- ✓ Jim McElhinny, director of Park & Recreation Services, commented that district staff is exploring various health insurance programs that may help subsidize these programs for qualifying patrons and that additional information should be forthcoming.

Earl replied that the explanations given do not change his opinion that the increase is unreasonable. He described again the low wages for the staff at the facilities, as well as his limited increase for social security.

- ✓ Jerry Jones Jr. thanked Earl for his testimony this evening, noting that the board has heard his concerns and that he is not being ignored. He commented that board members and staff have had conversations regarding Earl's concerns and that, as noted tonight, staff is looking into alternatives that may be of assistance to him.

Agenda Item #6 – Board Time

There were no comments during board time.

Agenda Item #7 – Consent Agenda

Bob Scott moved that the board of directors approve consent agenda items (A) Minutes of February 2, 2015 Regular Board Meeting, (B) Monthly Bills, (C) Monthly Financial Statement, (D) Resolution Authorizing the Issuance and Sale of General Obligation and Refunding Bonds and Issuance and Sale of Full Faith and Credit Refunding Obligations, (E) Resolution Authorizing Local Government Grant Program Application, (F) Resolution Adopting the Supplemental Budget for Capital Outlay Costs for the Fiscal Year 2014/15 Budget, and (G) Intergovernmental Agreement with Washington County and Oregon Department of Transportation for Westside Trail Segment #18. Joe Blowers seconded the motion. Roll call proceeded as follows:

Larry Pelatt	Yes
Jerry Jones Jr.	Yes
Joe Blowers	Yes
Bob Scott	Yes
John Griffiths	Yes

The motion was UNANIMOUSLY APPROVED.

Agenda Item #7 – Unfinished Business

A. Diversity & Inclusion Vision Statement

Kylie Bayer-Fertterer, diversity & inclusion coordinator, and Lisa Durden, Portland State University Hatfield Resident Fellow, provided a brief overview of the memo included within the board of directors' information packet regarding a diversity and inclusion vision statement proposed for the board's consideration this evening. Kylie and Lisa provided an overview of the development of the vision statement via a PowerPoint presentation, a copy of which was entered into the record, and announced the proposed statement as follows: "We provide all individuals the opportunity to play, learn, and explore, and all employees and volunteers the opportunity to further our mission. We do this by removing barriers to participation, fostering an inclusive culture, and offering programs that celebrate the district's diverse population." Kylie and Lisa offered to answer any questions the board may have.

Jerry Jones Jr. congratulated staff on their work and expressed support for the vision statement as drafted, noting that the statement addresses key factors that he had in mind, including moving forward the district's mission, addressing not just the district's participants, but the staff and volunteers, and touching on the district's diverse population, which is the most diverse population in the entire state.

- ✓ Joe Blowers expressed agreement with Jerry's comments.

Larry Pelatt commented that the language of "our mission" is too nebulous. He suggested replacing it with "the district's mission" or something more defined.

President Griffiths commented that, technically, the district does not provide all individuals with the services noted. He noted that the word "all" implies the world; whereas, THPRD provides services to its residents and others who participate.

- ✓ Larry suggested changing the language to "all who choose to participate."
- ✓ Jerry disagreed, noting that he believes the district does provide everyone the opportunity to participate, even if they are only visiting the area.
- ✓ Joe cautioned the board against wordsmithing the statement. He noted that by defining "all individuals", that definition itself could become a potential barrier. He encouraged the board to leave the definition open.

John reiterated that the current draft statement essentially states that the district's mission applies to the entire world. He also expressed agreement with Larry's comment regarding the need to clarify "our mission."

- ✓ Jerry asked staff to clarify their intent behind using the term "our mission" versus "the district's mission."
- ✓ Kylie replied that the proposed vision statement would not stand alone and would accompany the district's mission statement.

The board discussed the merits of changing the draft vision statement to "the district's mission" versus "our mission," as well as in what ways the vision statement would be used and whether, at times, it would be used in a manner removed from the district's mission statement.

Jerry Jones Jr. moved that the board of directors approve the diversity and inclusion vision statement as read: "We provide all individuals the opportunity to play, learn, and explore, and all employees and volunteers the opportunity to further the district's mission. We do this by removing barriers to participation, fostering an inclusive culture, and offering programs that celebrate the district's diverse population." Bob Scott seconded the motion. Roll call proceeded as follows:

Joe Blowers Yes
Larry Pelatt Yes
Bob Scott Yes
Jerry Jones Jr. Yes
John Griffiths Yes

The motion was **UNANIMOUSLY APPROVED**.

B. General Manager's Report

General Manager Doug Menke provided an overview of his General Manager's Report included within the board of directors' information packet, including the following:

- THPRD's 60th Anniversary
- Comprehensive Plan Update Implementation
 - Aisha Willits, director of Planning, provided a brief overview of the timeline for the upcoming functional plans development and policy reviews recommended by the 2013 Comprehensive Plan Update.
- Board of Directors Meeting Schedule

Doug offered to answer any questions the board may have.

- ✓ Hearing no comments or questions, President Griffiths requested the staff report for the next agenda item.

Agenda Item #9 – Unfinished Business

A. Athletic Facilities and Trails Functional Plans Development

Aisha Willits, director of Planning, introduced Scott Brucker, superintendent of Sports, and Steve Gulgren, superintendent of Planning & Development, to provide an overview of the memo included within the board of directors' information packet regarding the status of two new functional plans recommended for development through the 2013 Comprehensive Plan Update.

Scott and Steve provided a detailed overview of the development of two new functional plans, Athletic Facilities and Trails, via a PowerPoint presentation, a copy of which was entered into the record. Information presented included the anticipated content for each plan, development timeline, and public outreach strategy. Scott and Steve offered to answer any questions the board may have.

Joe Blowers commented that the outline for the Trails Functional Plan is very comprehensive.

Jerry Jones Jr. referenced the statement made during the staff presentation that each mile of the 2008 Bond Measure's trail segments averaged out to a cost of \$2.8 million. He requested a breakout of those costs be provided to the board.

- ✓ Larry agreed, noting that it is a staggering number, although he acknowledges that the most challenging trail segments were left for the bond program.
- ✓ Steve provided an example of the Augusta Lane Bridge on which the district has offered to partner with Washington County. If the county receives funding for the bridge, the district could potentially reroute a significant portion of the Beaverton Creek Trail in order to take advantage of the new bridge.

Larry questioned whether a main focus for district staff should be to seek out partnership and grant opportunities when faced with such costly trail projects.

- ✓ Joe commented that district staff has been diligent in submitting grant applications focused on trail projects. He noted that the price of roads per foot is also shocking and the reason the cost per mile for these trails is so significant is because these segments were the most challenging, as well as being delayed, which only increases the price even more.

President Griffiths was excused from the meeting.

Bob Scott asked how the public outreach is handled when the district decides to repurpose an existing athletic field to a neighborhood park.

- ✓ Scott replied that each year an interdepartmental staff team reviews a list of all of the district's athletic fields in order to determine how many field hours were assigned to each field, how many hours were used, how many hours were returned to the district, and the per unit cost. He described Roxbury Park as the most recent example of an athletic facility being repurposed to a park, noting that staff works with the user groups when making these types of decisions.

Joe asked how the Athletic Facilities Functional Plan will relate to the district's Athletic Field Needs Assessment Technical Report conducted in 2004.

- ✓ Scott replied that the information contained within that report would be taken into consideration in the development of the new functional plan, as would newer information and the field inventory analysis process.

Joe inquired whether the district still has a functioning Unified Fields Steering Committee.

- ✓ Scott replied that the committee has not met for quite some time as the user groups have been working together better than in the past.

Agenda Item #10 – Adjourn

There being no further business, the meeting was adjourned at 8 pm.

John Griffiths, President

Bob Scott, Secretary

Recording Secretary,
Jessica Collins

Check #	Check Date	Vendor Name	Check Amount
12033	02/11/2015	Community Newspapers, Inc. Advertising	1,306.40 \$ 1,306.40
285566	02/05/2015	AKS Engineering & Forestry, LLC	3,372.22
285580	02/06/2015	BBL Architects	23,373.33
285803	02/26/2015	BBL Architects Capital Outlay - Bond - Facility Expansion & Improvements	10,127.65 \$ 36,873.20
285728	02/20/2015	Marx Associates Capital Outlay - Bond - Land Acquisition	1,125.00 \$ 1,125.00
285578	02/05/2015	WACD Plant Materials Center	6,530.00
285727	02/20/2015	Vaughn Bell Capital Outlay - Bond - Natural Resources Projects	1,200.00 \$ 7,730.00
285569	02/05/2015	David Evans & Associates, Inc.	26,443.60
285806	02/26/2015	David Evans & Associates, Inc. Capital Outlay - Bond - New/Redeveloped Community Parks	53,038.80 \$ 79,482.40
285577	02/05/2015	Vigil-Agrimis, Inc.	27,256.42
285587	02/06/2015	Milroy Golf Systems, Inc. Capital Outlay - Bond - New/Redeveloped Neighborhood Parks	11,576.81 \$ 38,833.23
285573	02/05/2015	Paul Brothers, Inc. Capital Outlay - Bond - Retainage	2,500.00 \$ 2,500.00
285709	02/19/2015	Champoeg Nursery, Inc. Capital Outlay - Bond - Trails/Linear Parks	1,442.50 \$ 1,442.50
285582	02/06/2015	Cedar Mill Construction Company, LLC	4,660.70
285594	02/06/2015	Pacific Furnishings NW	2,585.09
285805	02/26/2015	Cedar Mill Construction Company, LLC Capital Outlay - Building Improvements	6,382.85 \$ 13,628.64
285673	02/13/2015	OP SIS Architecture, LLP	8,522.55
285808	02/26/2015	OP SIS Architecture, LLP	9,000.47
285571	02/05/2015	Natural Structures	3,935.00
285804	02/26/2015	Brandsen Hardwood Floors, Inc.	9,582.00
285574	02/05/2015	Players Racquet Shop	1,953.88
12244	02/11/2015	Hertz Equipment Rental, Inc.	1,150.00
285708	02/19/2015	Arizon Structures WorldWide, LLC	4,987.29
285782	02/25/2015	The Farley Group, Inc.	70,159.12
285777	02/25/2015	Hunter-Davisson, Inc.	3,401.00
285777	02/25/2015	Hunter-Davisson, Inc. Capital Outlay - Building Replacements	3,726.00 \$ 116,417.31
285570	02/05/2015	Mohawk Resources LTD Capital Outlay - Fleet Capital Replacement	9,055.86 \$ 9,055.86
285615	02/06/2015	Kronos Incorporated Capital Outlay - Information Technology Improvement	1,260.00 \$ 1,260.00
285572	02/05/2015	Northwest Playground Equipment, Inc. Capital Outlay - Park & Trail Improvements	1,670.00 \$ 1,670.00
285567	02/05/2015	AKS Engineering & Forestry, LLC	3,295.00
285575	02/05/2015	Ross Recreation Equipment Company, Inc.	4,165.00
12170	02/11/2015	Rexius Forest By-Products, Inc.	1,601.25
12260	02/11/2015	Print Graphics	1,579.03
285668	02/13/2015	3J Consulting, Inc.	7,407.56
285568	02/05/2015	City of Beaverton	1,000.00
285668	02/13/2015	3J Consulting, Inc. Capital Outlay - Park & Trail Replacements	3,579.69 \$ 22,627.53

<u>Check #</u>	<u>Check Date</u>	<u>Vendor Name</u>	<u>Check Amount</u>
285807	02/26/2015	Earthworks Excavation and Construction, Inc. Capital Outlay - SDC - Park Development/Improvement	15,333.96 \$ 15,333.96
285730	02/20/2015	Washington Federal Debt Service	12,757.58 \$ 12,757.58
285730	02/20/2015	Washington Federal Debt Service Interest	6,287.11 \$ 6,287.11
11714	02/11/2015	The Lifeguard Store, Inc. Due from Tualatin Hills Park Foundation	1,900.35 \$ 1,900.35
285794	02/25/2015	SOLV Dues & Memberships	1,500.00 \$ 1,500.00
285636	02/06/2015	PGE	52,048.96
285683	02/13/2015	PGE	3,169.33
285763	02/25/2015	PGE	1,867.08
285764	02/25/2015	PGE Electricity	28,551.10 \$ 85,636.47
285662	02/13/2015	Standard Insurance Company	181,848.39
285811	02/27/2015	Kaiser Foundation Health Plan	238,251.09
285812	02/27/2015	Moda Health Plan, Inc.	30,012.28
285816	02/27/2015	Standard Insurance Co.	13,327.14
285822	02/27/2015	UNUM Life Insurance-LTC Employee Benefits	1,314.00 \$ 464,752.90
285660	02/13/2015	PacificSource Administrators, Inc.	8,047.00
285663	02/13/2015	Standard Insurance Company	31,940.37
285664	02/13/2015	Standard Insurance Company	2,593.32
285667	02/13/2015	Voya Retirement Insurance & Annuity Co.	7,000.00
285814	02/27/2015	PacificSource Administrators, Inc.	9,078.00
285817	02/27/2015	Standard Insurance Company	31,713.35
285819	02/27/2015	Standard Insurance Company	2,793.32
285821	02/27/2015	THPRD - Employee Assn.	14,855.47
285824	02/27/2015	Voya Retirement Insurance & Annuity Co. Employee Deductions	6,875.00 \$ 114,895.83
285635	02/06/2015	NW Natural	36,685.45
285762	02/25/2015	NW Natural Heat	21,362.93 \$ 58,048.38
285603	02/06/2015	Universal Whistles, LLC	11,719.00
285772	02/25/2015	Beaverton Volleyball Officials Association	2,354.00
285799	02/25/2015	Universal Whistles, LLC Instructional Services	5,127.00 \$ 19,200.00
285600	02/06/2015	Special Districts Association of Oregon Insurance	1,000.00 \$ 1,000.00
11623	02/11/2015	Schulz-Clearwater Sanitation, Inc.	3,177.32
11631	02/11/2015	Schulz-Clearwater Sanitation, Inc.	3,901.00
12326	02/11/2015	Anderson Roofing Co., Inc.	3,312.00
12353	02/11/2015	Guaranteed Pest Control Service Co, Inc.	1,404.00
12359	02/11/2015	Lovett, Inc.	1,875.00
285690	02/13/2015	Cook Security Group	2,798.00
285696	02/13/2015	Interstate Roofing, Inc.	1,877.00
285781	02/25/2015	Lovett, Inc. Maintenance Services	2,410.91 \$ 20,755.23
285592	02/06/2015	ORCA Pacific, Inc.	1,261.65
285608	02/06/2015	Capital One Commercial	1,435.90

<u>Check #</u>	<u>Check Date</u>	<u>Vendor Name</u>	<u>Check Amount</u>
11946	02/11/2015	Coastwide Laboratories	2,025.47
12180	02/11/2015	Airgas Nor Pac, Inc.	8,731.41
12249	02/11/2015	Coastwide Laboratories	3,853.56
		Maintenance Supplies	\$ 17,307.99
11619	02/11/2015	OfficeMax Incorporated	1,724.86
11620	02/11/2015	OfficeMax Incorporated	1,400.54
11622	02/11/2015	Ricoh Americas Corporation	1,511.19
12265	02/11/2015	Ricoh Americas Corporation	1,470.72
		Office Supplies	\$ 6,107.31
285604	02/06/2015	US Postal Service CMRS-PB	3,000.00
285792	02/25/2015	Signature Graphics	34,286.00
285800	02/25/2015	US Postmaster	17,750.00
		Postage	\$ 55,036.00
285668	02/13/2015	3J Consulting, Inc.	1,310.00
285707	02/18/2015	Mark Sherman Consultants	3,232.00
0	02/25/2015	Beery, Elsnor & Hammond, LLP	4,718.03
0	02/25/2015	Smith Dawson & Andrews	3,000.00
285770	02/25/2015	Allegro Design	2,450.00
		Professional Services	\$ 14,710.03
11620	02/11/2015	OfficeMax Incorporated	2,655.67
11972	02/11/2015	Portland Trail Blazers	15,520.00
12215	02/11/2015	Kore Group	2,769.20
12230	02/11/2015	Kore Group	7,614.50
285674	02/13/2015	Oregon ASA Softball, Inc. - C/O Rebecca Dawson	1,625.00
285780	02/25/2015	Lewis & Clark College, Attn: Tennis Program	2,880.00
		Program Supplies	\$ 33,064.37
11622	02/11/2015	Ricoh Americas Corporation	3,132.02
12265	02/11/2015	Ricoh Americas Corporation	3,132.02
		Rental Equipment	\$ 6,264.04
285591	02/06/2015	Northwest Regional Education Services District	1,200.00
11942	02/11/2015	Sound Security, Inc.	11,430.00
		Technical Services	\$ 12,630.00
285760	02/25/2015	Integra Telecom	4,391.86
		Telecommunications	\$ 4,391.86
285796	02/25/2015	THP Foundation	2,715.07
		THPF Reimbursed Concessions/Sales	\$ 2,715.07
285797	02/25/2015	Tualatin Valley Water District	2,808.31
		Vehicle Gas & Oil	\$ 2,808.31
285637	02/06/2015	Tualatin Valley Water District	6,413.81
285766	02/25/2015	Tualatin Valley Water District	1,376.02
		Water & Sewer	\$ 7,789.83
285599	02/06/2015	Special Districts Association of Oregon	44,832.84
		Workers Compensation Insurance	\$ 44,832.84
			\$ 1,343,677.53

Tualatin Hills Park & Recreation District

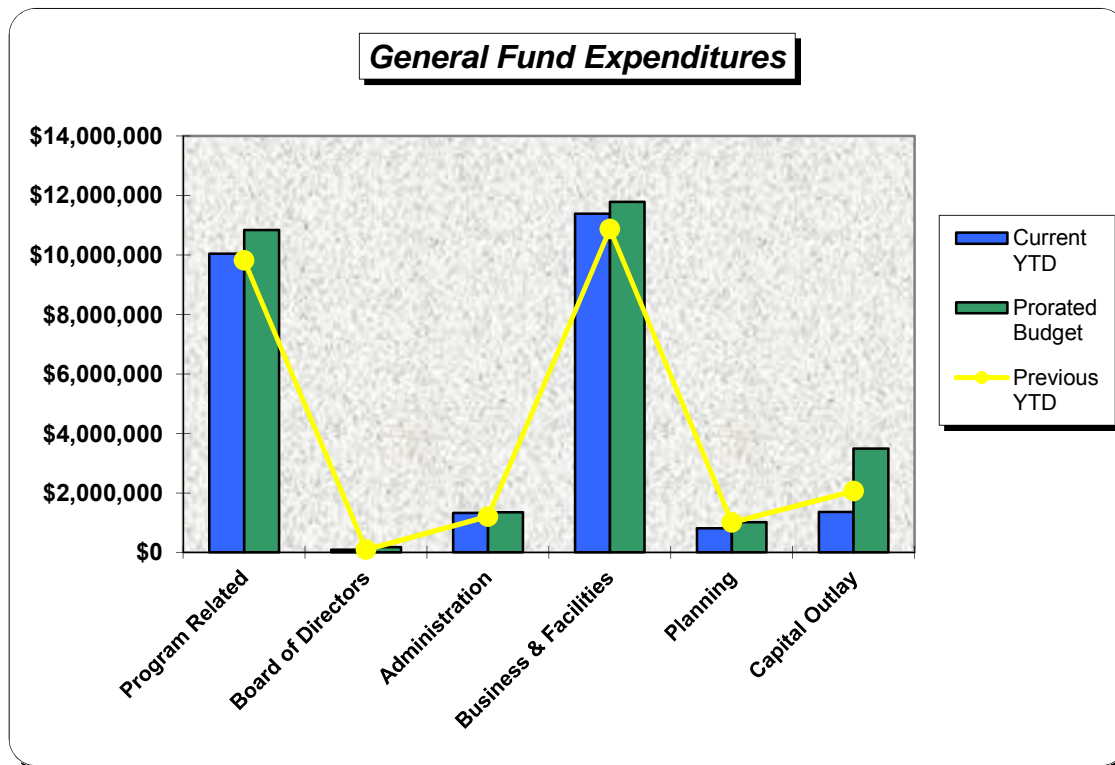
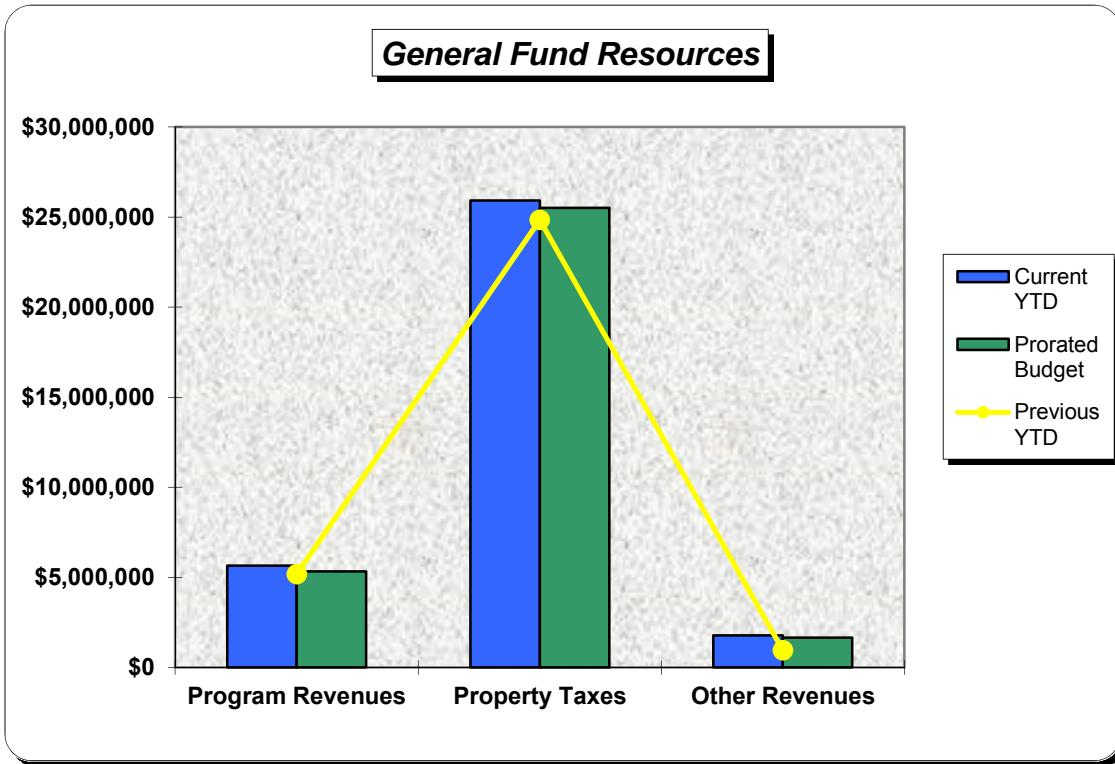
General Fund Financial Summary
February, 2015

	<i>Current Month</i>	<i>Year to Date</i>	<i>Prorated Budget</i>	<i>% YTD to Prorated Budget</i>	<i>Full Fiscal Year Budget</i>
Program Resources:					
Aquatic Centers	\$ 72,161	\$ 1,418,594	\$ 1,390,140	102.0%	\$ 2,755,784
Tennis Center	81,455	606,946	634,610	95.6%	1,034,170
Recreation Centers & Programs	278,140	2,761,632	2,584,357	106.9%	4,988,370
Sports Programs & Field Rentals	33,769	706,132	599,349	117.8%	1,219,146
Natural Resources	16,432	155,443	123,438	125.9%	318,668
Total Program Resources	481,957	5,648,747	5,331,894	105.9%	10,316,138
Other Resources:					
Property Taxes	704,816	25,921,477	25,518,876	101.6%	26,535,005
Interest Income	6,361	42,571	47,894	88.9%	135,000
Facility Rentals/Sponsorships	57,164	485,519	280,425	173.1%	462,000
Grants	100	787,060	701,957	112.1%	701,957
Miscellaneous Income	84,868	472,765	627,585	75.3%	960,783
Total Other Resources	853,309	27,709,392	27,176,737	102.0%	28,794,745
Total Resources	\$ 1,335,266	\$33,358,139	\$32,508,631	102.6%	\$39,110,883
Program Related Expenditures:					
Parks & Recreation Administration	41,311	381,684	483,765	78.9%	759,647
Aquatic Centers	291,790	2,556,340	2,771,381	92.2%	4,099,609
Tennis Center	91,658	702,309	685,843	102.4%	1,043,082
Recreation Centers	331,344	3,160,364	3,373,779	93.7%	4,925,270
Programs & Special Activities	106,990	1,078,049	1,174,138	91.8%	1,698,668
Athletic Center & Sports Programs	139,009	1,088,566	1,142,761	95.3%	1,789,516
Natural Resources & Trails	120,543	1,076,399	1,209,084	89.0%	1,794,939
Total Program Related Expenditures	1,122,645	10,043,711	10,840,750	92.6%	16,110,731
General Government Expenditures:					
Board of Directors	16,620	95,110	181,454	52.4%	261,119
Administration	190,006	1,329,130	1,345,641	98.8%	2,161,629
Business & Facilities	1,160,343	11,387,965	11,783,736	96.6%	17,571,260
Planning	98,733	806,685	1,017,912	79.2%	1,523,286
Capital Outlay	176,846	1,355,410	3,487,479	38.9%	4,660,718
Contingency	-	-	-	0.0%	2,100,000
Total Other Expenditures:	1,642,548	14,974,300	17,816,222	84.0%	28,278,012
Total Expenditures	\$ 2,765,193	\$25,018,011	\$28,656,973	87.3%	\$44,388,743
Revenues over (under) Expenditures	\$ (1,429,927)	\$ 8,340,128	\$ 3,851,658	216.5%	\$ (5,277,860)
Beginning Cash on Hand		\$ 6,445,779	5,277,860	122.1%	5,277,860
Ending Cash on Hand		\$14,785,907	\$ 9,129,518	162.0%	\$ -

Tualatin Hills Park and Recreation District

General Fund Financial Summary

February, 2015





MEMO

DATE: March 20, 2015
TO: Doug Menke, General Manager
FROM: Jim McElhinny, Director of Park & Recreation Services

RE: **Proclamation of National Water Safety Month**

The National Recreation and Park Association has identified May 2015 as National Water Safety Month. Submitted for consideration for the April 13, 2015 Board of Directors' meeting is a proclamation in observance of National Water Safety Month.

Action Requested

Board of directors' recognition and endorsement of the attached proclamation declaring May 2015 as National Water Safety Month in the Tualatin Hills Park & Recreation District.

TUALATIN HILLS PARK & RECREATION DISTRICT

PROCLAMATION

By the Board of Directors

WHEREAS, individuals and organized forms of recreation and the creative use of free time are vital to the happy lives of all of our citizens and education, athletic and recreation programs throughout the Tualatin Hills Park & Recreation District encompass a multitude of activities that can result in personal accomplishment, self-satisfaction and family unity for all citizens, regardless of their background, ability level or age; and

WHEREAS, citizens of the Tualatin Hills Park & Recreation District should recognize the vital role that swimming and aquatic-related activities relate to good physical and mental health and enhance the quality of life for all people; and

WHEREAS, the Tualatin Hills Park & Recreation District is extremely proud of the swimming facilities, aquatic programs and other related activities of their park district and their contribution to providing to all ages a healthy place to recreate, a place to learn and grow, to swim, build self-esteem, confidence and a sense of self-worth which contributes to the quality of life in our community;

NOW, THEREFORE, I, John Griffiths, Board of Directors President, Tualatin Hills Park & Recreation District, do hereby declare the month of May 2015 as

NATIONAL WATER SAFETY MONTH

And do urge all those in the Tualatin Hills Park & Recreation District to support and promote this observance.

Signed this 13th day of April, 2015.

John Griffiths, President

Bob Scott, Secretary



MEMO

DATE: March 31, 2015
TO: Doug Menke, General Manager
FROM: Jim McElhinny, Director of Park & Recreation Services

RE: Resolution Reappointing Natural Resources Advisory Committee Members

Introduction

The Natural Resources Advisory Committee requests board of directors' approval to reappoint two committee members.

Background

At their February 24, 2015 meeting, the Natural Resources Advisory Committee recommended that the board of directors reappoint Matthew Shepherd to the committee for a three-year term and Jack Shorr for a two-year term.

Please note that the respective applicants' applications and the Natural Resources Advisory Committee's current roster are attached.

Action Requested

Board of directors' approval of Resolution 2015-08, reappointing Matthew Shepherd and Jack Shorr to the Natural Resources Advisory Committee.

RESOLUTION 2015-08
TUALATIN HILLS PARK & RECREATION DISTRICT, OREGON

**A RESOLUTION REAPPOINTING
NATURAL RESOURCES ADVISORY COMMITTEE MEMBERS**

WHEREAS, the Tualatin Hills Park & Recreation District Board of Directors must appoint committee members by resolution; and

WHEREAS, Jack Shorr shall be appointed by the board for a two-year term and Matthew Shepherd shall be appointed by the board for a three-year term; and

WHEREAS, the committee members have demonstrated their interest and knowledge in the committee's area of responsibility

THE TUALATIN HILLS PARK & RECREATION DISTRICT RESOLVES AS FOLLOWS:

The board of directors approves the reappointment of Jack Shorr and Matthew Shepherd to the Natural Resources Advisory Committee.

Duly passed by the board of directors of the Tualatin Hills Park & Recreation District this 13th day of April, 2015.

John Griffiths, Board President

Bob Scott, Board Secretary

ATTEST:

Jessica Collins, Recording Secretary



TUALATIN HILLS PARK & RECREATION DISTRICT ADVISORY COMMITTEE APPLICATION

Name: Matthew Shepherd		Date: 2/9/2015	
Address:		City:	Zip:
Home Phone:	Cell:	Work Phone:	
Email:			

Advisory Committee you are applying for:
(You must reside within the THPRD boundaries)

- Aquatics Historic Facilities Natural Resources Parks
 Recreation Sports Stuhr Center Trails

- Please explain your interest in serving on the Advisory Committee:
I've been a regular user of THPRD parks and natural areas for a number of years and recognize the importance they hold both for THPRD in offering a full range of recreation activities and to the communities living in adjacent neighborhoods. In addition, as a major landowner within the Beaverton area, THPRD is looked to to provide leadership in environmental management. I hope to be able to support THPRD in maintaining natural areas and sustainable management to the highest level.
- How long have you lived in the community?
17 years
- Have you or your family participated in any Center or other Recreation District activities? Yes No
If yes, please explain in what you or your family participated in and where, when:
My whole family has enjoyed a wide variety of activities and sports – including prenatal swim classes, yoga, toddler activities, arts and crafts, and many years of soccer and basketball – which have taken us to several recreation centers and facilities. We also are regular walkers in our local parks, have swung and slid at playgrounds, and visit to watch wildlife.
- Have you served on other volunteer committees? Yes No
If yes, please explain where, when, and what your responsibilities were:
I was a member of the Tualatin Hills Nature Park advisory committee for a couple of years before that group was dissolved. I have been a member of the Natural Resources Advisory Committee since its establishment in 2010, and have served as chair and secretary.
Beyond THPRD, I have served on numerous committees at both the local and national level. Some examples are the board of Friends of Tryon Creek State Park, the committee of Fans of Fanno Creek, and the steering committee of the North American Pollinator Protection Campaign.
- Please describe any work experience or areas of expertise that you feel would benefit the Advisory Committee:
I have been professionally involved with habitat management, environmental education, and public outreach for three decades. My current job is as communications director for the Xerces Society for Invertebrate Conservation, a Portland-based non-profit that works across North America.
- Term of Office preferred (please check one):
 2-year term or 3-year term



TUALATIN HILLS PARK & RECREATION DISTRICT ADVISORY COMMITTEE APPLICATION

Name: Jack Shorr		Date: 2/17/2015	
Address:		City:	Zip:
Home Phone:	Cell:	Work Phone:	
Email:			

Advisory Committee you are applying for:
(You must reside within the THPRD boundaries)

- Aquatics Historic Facilities Natural Resources Parks
 Recreation Sports Stuhr Center Trails

- Please explain your interest in serving on the Advisory Committee:
I enjoy learning about the Parks NR Programs, contributing to on-going activities and park project developments, supporting my community, and working with fellow Committee members.
- How long have you lived in the community?
Thirty years
- Have you or your family participated in any Center or other Recreation District activities? Yes No
If yes, please explain in what you or your family participated in and where, when:
In years past my sons played Rec. basketball, while I coached. I also volunteer in the Adopt A Park Program.
- Have you served on other volunteer committees? Yes No
If yes, please explain where, when, and what your responsibilities were:
- Please describe any work experience or areas of expertise that you feel would benefit the Advisory Committee:
I am a Master Gardener, Master Watershed Steward, and a Master Naturalist- Willamette Valley Ecoregion Specialization
- Term of Office preferred (please check one):
 2-year term or 3-year term



Tualatin Hills Park & Recreation District
NATURAL RESOURCES
ADVISORY COMMITTEE ROSTER

Last Updated: March 31, 2015

<i>Committee Member</i>	<i>Member Since</i>	<i>Term Expires</i>
Matthew Shepherd	February 2010	April 2018 (after renewal)
Mitch Cruzan	May 2010	September 2016
Cory Samia	May 2010	September 2016
Jack Shorr	February 2012	April 2017 (after renewal)
Laura Porter *Chair as of 2/24/15	October 2013	October 2015

<i>Staff Liaisons</i>		<i>Term Expires</i>
Bruce Barbarasch	Staff THPRD	N/A
Kristin Atman	Staff THPRD	N/A



MEMO

DATE: April 8, 2015
TO: Doug Menke, General Manager
FROM: Aisha Panas, Director of Park & Recreation Services

RE: Parks Functional Plan

Summary

The Parks Functional Plan (PFP) provides a vision and set of tools to help staff prioritize and measure the success of park planning, development and maintenance in the district. Staff will present highlights of the plan and seek board input. Board approval of the document will be requested at the June 8th meeting. The draft PFP is currently undergoing final staff review/comments and will be provided to the board via email prior to your meeting, as well as posted on the district's website.

Background

The district's first comprehensive plan provided a guide for future decisions and activities about how the district would acquire, develop, operate and maintain land, facilities and programs over a 20-year period. Subsequent updates to this plan occurred in 2006 and 2013 to recognize accomplishments and identify future needs based on changing in-district demographics and trends in providing park and recreation services.

With the 2013 Comprehensive Plan Update, there was a directive for staff to create functional plans to guide their work. In total, five functional plans will be developed in the areas of athletic facilities, natural resources (approved in December 2014), parks, programs and trails. In spring 2014, an interdepartmental committee was formed to create and develop the PFP. The plan also received review from various district advisory committees, a community open house and agency peer review. The plan was also available online at the district's website for public review and comment.

As part of the PFP's development, a consultant was used to complete the neighborhood park inventory that was initially undertaken with the 2013 Comprehensive Plan Update. Information from this inventory and analysis has been incorporated into the plan and serves as a baseline for monitoring future success. Furthermore, this information also identified initial priorities for land acquisition and park development needs.

The PFP is a guide to help the district achieve level-of-service standards established in the 2013 Comprehensive Plan Update. It establishes guidance for park land acquisition, prioritization criteria for park development, expectations for park design and maintenance and ways of monitoring progress. The plan also serves as a tool to help stakeholders, including district staff, understand how and why park planning, development and maintenance decisions are made.

Proposal Request

The PFP contains sections on the following topics:

1. Existing Conditions / Where We Are Now: Provides an overview of accomplishments between the 2006 and 2013 Comprehensive Plan updates; identifies future park needs; outlines level-of-service scoring criteria and methodology; and defines the current park inventory.
2. Future Conditions / Where We Want to Be: Outlines minimum expectations for new parks and improving level-of-service at existing parks; establishes prioritization criteria for park development; and identifies priority areas for land acquisition, new park development and existing park redevelopment.
3. Achieving Success / How We Get There: Establishes site suitability criteria for land acquisition; outlines guidelines for public involvement, encroachments, park naming, property disposition, park design and maintenance operations; and outlines potential funding sources.
4. Success Monitoring / How Are We Doing: Identifies traditional and operational performance measures and short-term and long-term monitoring procedures.

Benefits of Proposal

The proposal will provide guidance for staff, clarify park planning and development decisions and priorities for stakeholders, and will provide supporting information to be used when writing grant proposals.

Potential Downside of Proposal

There are no potential downsides to the proposal.

Action Requested

No formal action is requested. Staff is seeking board of director's review and input of the Parks Functional Plan. Board approval of the final document will be requested at the June 8, 2014 regular board meeting.



MEMO

DATE: April 2, 2015
TO: The Board of Directors
FROM: Doug Menke, General Manager

RE: General Manager's Report for April 13, 2015

Pioneer's Field of Excellence Award: Trask Henningsen

Trask Henningsen, HMT athletic facilities coordinator, and his crew have received the national 2014 Pioneer Athletics "Field of Excellence" Award in recognition for the outstanding care of HMT baseball field #2. Winners are selected based on the quality of their athletic field maintenance throughout the year. Pioneer Athletics, a leading paint, equipment, and accessories manufacturer, completed a rigorous judging process that yielded 71 winners from a pool of 250 applicants. THPRD was one of only five winners selected located west of the Mississippi River.

The Fields of Excellence Award Program was established in 1997 and has honored over 605 athletic fields from around the country since its creation. Pioneer understands that excellence in athletic field maintenance goes unrecognized and often, unappreciated. The Field of Excellence Award Program honors outstanding athletic fields and the hardworking field crews who diligently maintain them. Colleges, universities, high schools and park & recreation departments from all over the United States submitted photographs, letters of recommendation and application forms describing their institutions detailed athletic field maintenance program.

Trask will be in attendance at your meeting to be recognized for this award. He has been with the district for four years and has worked in his current position since 2013. He plays an integral part in the success of the athletic facilities department and represents the park district well.

THPRD Diversity & Inclusion Climate Survey

Lisa Durden, Portland State University Hatfield Resident Fellow, worked with THPRD to administer an organizational climate survey. The survey was designed to gauge employee and volunteer perceptions related to diversity and inclusion while capturing demographics. The survey, which is now closed, had a statistically valid response rate: 190 (91%) full-time and regular part-time employees and 232 (35%) part-time employees completed the survey. Results from the volunteer climate survey will be available after April 13, when the volunteer survey closes. The organizational climate survey report will be available in May 2015. Responses from the survey will help to guide strategic planning efforts for diversity and inclusion at THPRD.

Greenway Park Beaver Dam

Beavers have been building dams and living along Fanno Creek in Greenway Park for at least 20 years, often building dams in plain view of park visitors. However, in summer 2014, a new dam was constructed in the central portion of the park which pushed water onto a loop path near the main Fanno Creek Trail. At first patrons could easily walk around the water, but over time, the pool grew larger and staff closed the trail in late fall 2014. Natural resources staff watched the dam to see if it would hold up to winter rains: it did. Staff doesn't normally remove

dams because beavers will often rebuild them in a matter of hours or days, destroying more park vegetation in the process.

The dam has drawn a good deal of public interest. Staff has considered several short term steps to address the dam. In this process, input was sought from the State of Oregon Department of Fish and Wildlife and Clean Water Services. Prior to taking any significant action, staff has been seeking public comment as to what park neighbors and users feel is an appropriate way to address the situation, not including harming the beavers.

Now that we know the dam will be in place for the long term, staff designed three options to provide patron access and support wildlife. An on-line survey was opened on March 25 and will conclude on April 13. As of mid-week of the week of April 6, nearly 100 people have taken the survey. Staff will evaluate the results of the survey and begin steps to address the dam as appropriate.

Art in the Park Installations

- HMT Complex ADA Parking Improvements Project Art Wall: A stainless steel art wall was recently installed in an approach wall to the Aquatic Center as part of the Americans with Disabilities Act (ADA) parking improvements on the HMT Complex. Each of our bond construction projects have included an artist element worth 1% of the construction budget. For this project, the retaining wall near the stairs to the Aquatic Center was an obvious focal point opportunity for an art installation. A metal piece was the first choice as it is more durable than tile or paint and typically more eye-catching than concrete relief. Staff sought out an artist and researched costs amongst multiple local arts councils. Gina Nash of Experienced Materials was the chosen artist. The design includes a series of panels showing naturescapes including floral and fauna seen throughout the district. Photos of the project will be shown at your meeting.
- Nature Revealed Art Installations: The Natural Resources Department worked with a citizen's committee, the Regional Arts and Culture Council, and four artists to create, construct, and install interpretive, natural resource art installations at five natural areas to educate patrons about natural history and the environment. This series of bond-funded interpretive features is titled: *Nature Revealed: Discovering Nature through Art*. The pieces can be found at Hazeldale, Rock Creek Greenway, Jordan Woods, Greenway and Raleigh Parks. All of the pieces have now been installed. Small interpretive signs to accompany the art as well as plantings will be taking place over the next few weeks. A grand opening celebration is expected in late spring. Photos of the projects will be shown at your meeting

Board of Directors Meeting Schedule

The following dates are proposed for the board of directors and budget committee's meeting schedule over the next few months:

- Budget Committee Work Session – Monday, April 20 (at the Elsie Stuhr Center)
- May Regular Board Meeting – Monday, May 4
- Budget Committee Meeting – Monday, May 18
- Joint Meeting with City of Beaverton Council – Tuesday, June 2 (at City Hall)
- June Regular Board Meeting – Monday, June 8
- June Budget Adoption Meeting – Monday, June 22
- July Regular Board Meeting – No Meeting Scheduled
- August Regular Board Meeting – Monday, August 10
- September Regular Board Meeting – No Meeting Scheduled
- October Regular Board Meeting – Monday, October 5



MEMO

DATE: April 1, 2015
TO: The Board of Directors
FROM: Doug Menke, General Manager

RE: **Resolution Appointing Parks Bond Citizen Oversight Committee Members**

Introduction

Staff requests board of directors' appointment of six Parks Bond Citizen Oversight Committee members.

Background

Currently there are six open positions on the district's Parks Bond Citizen Oversight Committee due to the expiration of the following committee members' terms: Frank Angelo, Rob Drake, Boyd Leonard, Rob Massar, Matthew McKean, and Marc San Soucie. The positions are two-year terms. Notice of the vacancies was published and 11 applications were received (attached).

At the request of President Griffiths, a scoring matrix was distributed to the board members in order to assist with the discussion regarding the applicants. The completed scoring matrix will be provided to the board in advance of the April 13, 2015 board meeting.

The resolution establishing the committee designates the membership size to be no less than seven and no more than 12 members. Please find attached a current committee roster.

Proposal Request

Staff requests board discussion and appointment of six of the applicants to the Parks Bond Citizen Oversight Committee, each for a term of two years.

Action Requested

Board of directors' approval of Resolution 2015-09 Appointing Parks Bond Citizen Oversight Committee Members.

**RESOLUTION 2015-09
TUALATIN HILLS PARK & RECREATION DISTRICT, OREGON**

**A RESOLUTION APPOINTING
PARKS BOND CITIZEN OVERSIGHT COMMITTEE MEMBERS**

WHEREAS, the Tualatin Hills Park & Recreation District Board of Directors must appoint committee members by resolution; and

WHEREAS, the committee members shall be appointed by the Board for a two-year term; and

WHEREAS, the selected committee members have demonstrated their interest and knowledge in the committee's area of responsibility. Now, therefore

THE TUALATIN HILLS PARK & RECREATION DISTRICT RESOLVES AS FOLLOWS:

The Board of Directors approves the appointments of

to the Parks Bond Citizen Oversight Committee.

Duly passed by the Board of Directors of the Tualatin Hills Park & Recreation District this 13th day of April 2015.

John Griffiths, Board President

Bob Scott, Board Secretary

ATTEST:

Jessica Collins, Recording Secretary



**Tualatin Hills Park & Recreation District
Parks Bond Citizen Oversight Committee Application**

Name: FRANK ANGELO

Date: 2/21/2015

Please note you must reside within the Park District's boundaries to serve on the Committee.

1. Please explain your interest in serving on the Parks Bond Citizen Oversight Committee:

Current Member of The Bond Oversight Committee - Appointed in 2013. I'd like to continue to serve for one more term. Continued interest in seeing that the District gets the most value from the bond funds and delivers projects on time and budget.

2. How long have you lived in the community?

Since 1985 - in Cedar Hills.

3. Have you served on other volunteer committees? Yes No

If yes, please explain where, when, and what your responsibilities were:

- Tualatin Hill Park Foundation Board Trustee (past)
- Westside Economic Alliance Board (current)
- Southwestern Presbyterian Church Foundation Board (current)

4. If employed, what is your occupation?

Employed by the Angelo Planning Group - Land use planning firm. I'm a Principal/Owner & Project Manager

5. Please describe any work experience or areas of expertise that you feel would benefit the Parks Bond Citizen Oversight Committee:

- Own my business - Responsible for budgeting and business aspects
- Work with Public Agencies on development permitting

Please return application by February 23, 2015 to:

Mail: Attn: Jessica Collins, Executive Assistant
Tualatin Hills Park & Recreation District
15707 SW Walker Road, Beaverton, OR 97006

Fax: 503-629-6303

Email: jcollins@thprd.org



Tualatin Hills Park & Recreation District Parks Bond Citizen Oversight Committee Application

Name: Rob Drake

Date: Feb. 22, 2015

Please note you must reside within the Park District's boundaries to serve on the Committee.

1. Please explain your interest in serving on the Parks Bond Citizen Oversight Committee:

For the last four years, I have served on the Bond Oversight Committee. It has been a wonderful experience making recommendations to the Board of Directors. My relationship with THPRD goes back multiple decades and I want to be able to contribute in a meaningful way for the continued success of the District. Having worked for the District in high school and college, it has been exciting watching the continued growth in services and positive impact to the residents of the District.

2. How long have you lived in the community?

I have lived in the community for over 50 years and have valued contributing to help make our community a better place to live, work and play. I have been honored to work with multiple THPRD General Managers, including Howard Terpenning. The quality of services continues to improve and the District makes many positive contributions to our community. My long term view brings added depth to the committee and helps enrich the depth of analysis and recommendations to the full board.

3. Have you served on other volunteer committees? Yes No
If yes, please explain where, when, and what your responsibilities were:

In the past four years, I have served on the Bond Oversight Committee. Previously, I served as an ex-officio member of the THPRD Foundation while serving as Mayor of Beaverton. My additional support for the District comes through active endorsement of bond elections and having a positive and proactive relationship with multiple THPRD General Managers.

4. If employed, what is your occupation?

From 1993 through 2008, I served as full-time Mayor/CEO for the City of Beaverton. I am familiar with government budgeting, bidding processes, oversight on construction projects, and providing direction to contractors and staff. For the past three years I have served as City Manager for City of Cornelius. We are responsible for park services, bidding and oversight of construction processes, and I'm responsible for producing our annual budget.

5. Please describe any work experience or areas of expertise that you feel would benefit the Parks Bond Citizen Oversight Committee:

Currently, I served as City Manager for the City of Cornelius. Previously, I served 16 years as Mayor/CEO for the City of Beaverton.

Please return application by February 23, 2015 to:

Mail: Attn: Jessica Collins, Executive Assistant
Tualatin Hills Park & Recreation District
15707 SW Walker Road, Beaverton, OR 97006
Fax: 503-629-6303
Email: jcollins@thprd.org



Tualatin Hills Park & Recreation District Parks Bond Citizen Oversight Committee Application

Name: Mark Knudsen

Date: February 4, 2015

Please note you must reside within the Park District's boundaries to serve on the Committee.

1. Please explain your interest in serving on the Parks Bond Citizen Oversight Committee:
I have long believed the Park District is one of the most important agencies in the area. I would like to help continue this tradition.
2. How long have you lived in the community?
35 years
3. Have you served on other volunteer committees? Yes [x] No []
If yes, please explain where, when, and what your responsibilities were:

Tualatin Hills Foundation	current
Tualatin Hills Park and Recreation District	1993-2005
Board of Directors	
4. If employed, what is your occupation?
Retired from health care administration where part of my responsibility was to manage large investment portfolios with specific instructions from donors, grantors and others.
5. Please describe any work experience or areas of expertise that you feel would benefit the Parks Bond Citizen Oversight Committee:
See above

Please return application by February 23, 2015 to:
Mail: Attn: Jessica Collins, Executive Assistant



TUALATIN HILLS PARK & RECREATION DISTRICT

Tualatin Hills Park & Recreation District Parks Bond Citizen Oversight Committee Application

Name: Boyd Leonard Date: ~~7-7-13~~ 2-20-15

Please note you must reside within the Park District's boundaries to serve on the Committee.

1. Please explain your interest in serving on the Parks Bond Citizen Oversight Committee:
My family has always enjoyed & utilized THPRD facilities which we feel are of high quality. By serving on the Bond Oversight Committee I feel I can be of assistance to THPRD in continuing to achieve that high quality.
2. How long have you lived in the community?
1975-1990 we moved back to this area in May 2008 in order to be nearer to our family & watch our family (grand children) grow up & achieve great things.
3. Have you served on other volunteer committees? Yes No
If yes, please explain where, when, and what your responsibilities were:
Clarkston Golf & Country Club, Clarkston, WA, from 2002-2008 I chaired the Finance Committee & was elected to the Board of Directors in 2006 & served in that capacity until we moved in 2008.
THPRD Oversight Committee (Bond) 2011-2013.
4. If employed, what is your occupation?
Retired -- U.S. Forest Service 1963-1995 in primarily Budget & Accounting Activities
1996-2001 -- City of Colfax, WA -- City Treasurer -- Retired.
2002-2007 -- City of Lewiston, ID -- PT Grant Administrator
5. Please describe any work experience or areas of expertise that you feel would benefit the Parks Bond Citizen Oversight Committee: For approximately 7 years I was the "Current Year" Regional Budget Ofc for the National Forests in OR & WA. Coordinated the preparation & execution of a \$500,000,000 Budget, City of Colfax -- responsible for overall acctg & budget activities THPRD -- 4 years experience with the THPRD Bond Oversight Group & their responsibilities.

Please return application by ~~March 8, 2015~~ Feb 23, 2015

Mail: Attn: Jessica Collins, Executive Assistant
Tualatin Hills Park & Recreation District
15707 SW Walker Road, Beaverton, OR 97006

Fax: 503-629-6303

Email: jcollins@thprd.org

**Tualatin Hills Park & Recreation District
Parks Bond Citizen Oversight Committee Application**

Name: Rob Massar

Date: Jan. 7, 2009

(resubmitted 2/20/15)

Please note you must reside within the Park District's boundaries to serve on the Committee.

1. Please explain your interest in serving on the Parks Bond Citizen Oversight Committee:

I live in the district and am very interested in THPRD's successful implementation of the Bond measure

2. How long have you lived in the community?

55 years

3. Have you served on other volunteer committees? Yes [+] No []

If yes, please explain where, when, and what your responsibilities were:

I have served on many committees, both as a volunteer and in my profession. Currently, as a volunteer, I serves as the treasurer and board member of the Oregon Family Institute (www.oregonfamilyinstitute.org)

4. If employed, what is your occupation?

From 1990 to November 2008, I worked with the City of Hillsboro as the Finance Director for the first 8 years and as the Assistant City Manager for the remaining years. Included in my responsibilities as the Assistant City Manager, I oversaw the Hillsboro Parks and Recreation department and all major Capital projects. During that time, I developed and carried out a Capital Improvement program that included the Hillsboro Civic Center, Parks and Recreation buildings, Police precincts, Fire Stations, Libraries, Etc.

Since November 2008, I have worked with Washington County as the Assistant County Administrator

5. Please describe any work experience or areas of expertise that you feel would benefit the Parks Bond Citizen Oversight Committee:

I have authored several bond measures. I have been responsible for the issuance of many Bonds, both competitive and negotiated, and have been responsible for the disposition of Bond Proceeds.



Tualatin Hills Park & Recreation District Parks Bond Citizen Oversight Committee Application

Name: [REDACTED]	Date: 2-9-2015
Address: [REDACTED]	
Phone: [REDACTED]	(w): [REDACTED]
Email: [REDACTED]	

Please note you must reside within the Park District's boundaries to serve on the Committee.

1. Please explain your interest in serving on the Parks Bond Citizen Oversight Committee:

I have two children who have extensively utilized the THPRD for the past 15 years. I have been impressed with the programs and facilities and would like to be a part of continuing that success into the future. Although my children are getting older, my entire family plans to remain in the area and take advantage of the various offerings of the THPRD.

2. How long have you lived in the community?

I have lived at the same residence inside the THPRD boundaries for 15 years.

3. Have you served on other volunteer committees? Yes No
If yes, please explain where, when, and what your responsibilities were:

I am a current member of the Oversight Committee
I am currently a director of the Washington County Bar Association.
I am currently an elected delegate to the Oregon State Bar House of Delegates

4. If employed, what is your occupation?

I am an attorney in private practice in Washington County.

5. Please describe any work experience or areas of expertise that you feel would benefit the Parks Bond Citizen Oversight Committee:

Before becoming an attorney, I worked at the Boeing Company in a professional business capacity. I have extensive experience with budgeting and finance. As an attorney, a sizable part of my practice is business law.

Please return application by February 23, 2015 to:

Mail: Attn: Jessica Collins, Executive Assistant
Tualatin Hills Park & Recreation District
15707 SW Walker Road, Beaverton, OR 97006
Fax: 503-629-6303
Email: jcollins@thprd.org



**Tualatin Hills Park & Recreation District
Parks Bond Citizen Oversight Committee Application**

Name: Fred Ruby

Date: February 17 2015

Please note you must reside within the Park District's boundaries to serve on the Committee.

1. Please explain your interest in serving on the Parks Bond Citizen Oversight Committee: *I recently retired after completing a 30-year legal career (18 years in private practice followed by 12 years as an assistant attorney general with the Oregon Dept. of Justice). I would like to stay involved in community service and public affairs and I use the Fanno Creek Trail every day!*

2. How long have you lived in the community? *I have lived continuously in the THPRD since 1989. All three of my sons (now ages 30, 25 + 20) participated in THPRD classes and programs.*

3. Have you served on other volunteer committees? Yes No

If yes, please explain where, when, and what your responsibilities were:

*Member, Beaverton City Council, 2000-2006.
Member, Beaverton Library Board, 1998-2000
Member, Beaverton Budget Committee, 1994-1997*

4. If employed, what is your occupation?

As noted in #1 above, I was an attorney for 30 years. My chief area of practice was bankruptcy and commercial law, although I sometimes handled real estate matters, primarily title issues and disputes regarding lienholders.

5. Please describe any work experience or areas of expertise that you feel would benefit the Parks Bond Citizen Oversight Committee:

In addition to the community service listed above, I also served a 5-year term on the Oregon State Bar Professional Liability Fund Board of Directors, from 2007-2011.

Please return application by February 23, 2015 to:

Mail: Attn: Jessica Collins, Executive Assistant
Tualatin Hills Park & Recreation District
15707 SW Walker Road, Beaverton, OR 97006
Fax: 503-629-6303
Email: jcollins@thprd.org



Tualatin Hills Park & Recreation District
Parks Bond Citizen Oversight Committee Application

Name: Jeannine Rustad Date: 2/23/15

Please note you must reside within the Park District's boundaries to serve on the Committee.

1. Please explain your interest in serving on the Parks Bond Citizen Oversight Committee:

I have been looking for a way to become more active in the community in a manner that will allow me to put to use my background in finance, law and planning.

2. How long have you lived in the community? 9+ years

3. Have you served on other volunteer committees? Yes No

If yes, please explain where, when, and what your responsibilities were:

Volunteer at the Specialized Recreation program at the Eric Stuhr Center starting ~2008/9 to 2012/13. (more intermittent in past year).

4. If employed, what is your occupation? Land use planner.

5. Please describe any work experience or areas of expertise that you feel would benefit the Parks Bond Citizen Oversight Committee:

- Bachelor of Science in Finance
- Eleven years as an attorney (land use and contracts)
- Project and budget management experience (8 years), as well as grant management and compliance (6 years)

Please return application by February 23, 2015 to:

Mail: Attn: Jessica Collins, Executive Assistant
Tualatin Hills Park & Recreation District
15707 SW Walker Road, Beaverton, OR 97006
Fax: 503-629-6303
Email: jcollins@thprd.org



**Tualatin Hills Park & Recreation District
Parks Bond Citizen Oversight Committee Application**

Name: JOE SHORE Date: 2-18-2015

Please note you must reside within the Park District's boundaries to serve on the Committee.

1. Please explain your interest in serving on the Parks Bond Citizen Oversight Committee:

- LOOKING FOR VOLUNTEER OPPORTUNITY USING SKILLS FROM WORK CAREER
- INTEREST IN OUR PUBLIC LANDS AND THAT TAX (BONDS) FUNDS USED EFFECTIVELY WITH DESIRED RESULTS.

2. How long have you lived in the community?

LIVED IN PARK & REC. DISTRICT FOR 25+ YEARS.

3. Have you served on other volunteer committees? Yes No

If yes, please explain where, when, and what your responsibilities were:

- FEDERAL CREDIT UNION/HOQUIAM, WA / CREDIT COMMITTEE MEMBER AND CHAIR. 1980-85
- GRAYS HARBOR SOLID WASTE SITE ASSESSMENT COMM. / IN WASHINGTON, 1980-84

4. If employed, what is your occupation?

- RETIRED PROFESSIONAL FORESTER
POSITION - MANAGER OF ACQUISITIONS & APPRAISALS
EDUCATION - BS / MS. / MBA

5. Please describe any work experience or areas of expertise that you feel would benefit the Parks Bond Citizen Oversight Committee:

- VALUED & ANALYZED TIMBERLAND ACROSS U.S. FOR TIMBER MANAGEMENT & INVESTMENT FIRM - VALUES RANGED FROM SEVERAL THOUSAND DOLLARS TO OVER ONE BILLION.

Please return application by February 23, 2015 to:

Mail: Attn: Jessica Collins, Executive Assistant
Tualatin Hills Park & Recreation District
15707 SW Walker Road, Beaverton, OR 97006
Fax: 503-629-6303



**Tualatin Hills Park & Recreation District
Parks Bond Citizen Oversight Committee Application**

Name: DAVID SWANSON Date: 2-23-2015

Please note you must reside within the Park District's boundaries to serve on the Committee.

1. Please explain your interest in serving on the Parks Bond Citizen Oversight Committee:

LONG TIME AREA RESIDENT NOW SEEKING WAYS TO
GIVE BACK TO LOCAL COMMUNITY AFFAIRS

2. How long have you lived in the community?

SINCE 1949

3. Have you served on other volunteer committees? Yes No
If yes, please explain where, when, and what your responsibilities were:

BOARD MEMBER - GIRL SCOUTS COLUMBIA COUNTY 1985 ---

4. If employed, what is your occupation?

RETIRED - FORMER CEO - FOREST PARK FEDERAL CREDIT UNION
1980-2012

5. Please describe any work experience or areas of expertise that you feel would benefit the Parks Bond Citizen Oversight Committee:

SEE LINKEDIN PROFILE DAVID L SWANSON

Please return application by February 23, 2015 to:

Mail: Attn: Jessica Collins, Executive Assistant
Tualatin Hills Park & Recreation District
15707 SW Walker Road, Beaverton, OR 97006
Fax: 503-629-6303
Email: jcollins@thprd.org



Tualatin Hills Park & Recreation District
Parks Bond Citizen Oversight Committee Application

Name: NANCY WELLS Date: 2/23/2015

Please note you must reside within the Park District's boundaries to serve on the Committee.

1. Please explain your interest in serving on the Parks Bond Citizen Oversight Committee:

Avid enjoyer of THPRD parks and very supportive of mission.

2. How long have you lived in the community?

I have lived here since 2006 with a temporary work related relocation for 2 years from mid 2012 to mid 2014.

3. Have you served on other volunteer committees? Yes No

If yes, please explain where, when, and what your responsibilities were:

lived on the
ing neighborhoods
ittee of CPOI
al years

I am a board member of several professional organizations including the Willamette Valley ISACA chapter. I have extensively involved in Cedar Mill PTC and was a soccer for several years. Involved in Cub Scouts also.

4. If employed, what is your occupation?

Not currently employed but my profession is auditing, I am certified CISA and CRISC

5. Please describe any work experience or areas of expertise that you feel would benefit the Parks Bond Citizen Oversight Committee:

Auditing, extensive volunteering helping clean up trails
Project Management and ~~see~~ scope control, Budget on PTC and in work functions

Please return application by February 23, 2015 to:

Mail: Attn: Jessica Collins, Executive Assistant
Tualatin Hills Park & Recreation District
15707 SW Walker Road, Beaverton, OR 97006
Fax: 503-629-6303
Email: jcollins@thprd.org



Tualatin Hills Park & Recreation District Parks Bond Citizen Oversight Committee

Updated: May 1, 2014

<i>Committee Member</i>	<i>Term Expires</i>
Frank Angelo	April 2015
Wink Brooks	April 2016
Rob Drake	April 2015
Boyd Leonard	April 2015
Kahler Martinson	April 2016
Rob Massar	April 2015
Matthew McKean	April 2015
Anthony Mills	April 2016
Kevin O'Donnell	April 2016
Stephen Pearson	April 2016
Jack Platten	April 2016
Marc San Soucie, Chair	April 2015
<i>Ex-Officio Member</i>	<i>Term Expires</i>
Bob Scott Board of Directors	N/A
Keith Hobson Director of Business & Facilities	N/A
Aisha Panas Director of Planning	N/A



Management Report to the Board April 13, 2015

Communications & Outreach

Bob Wayt, Director of Communications & Outreach

1. The park district's summer activities guide was mailed in late March to all households within THPRD boundaries. As usual, the summer camp guide was included. Copies of the book were also distributed to THPRD facilities and selected community sites, including Beaverton-area libraries. The book has been available on www.thprd.org since mid-March. Registration for summer programs and activities begins April 18 at 8 am.
2. A redesign of THPRD's website is nearly complete and ready for unveiling to the public. A primary goal of the project has been to optimize the site for mobile devices. Among the many other features will be better organization and improved search tools for quicker navigation; new pages that describe and illustrate the district's parks, trails and natural areas; and a "microsite" that displays essential programming information for Spanish-speaking visitors.
3. THPRD has produced a four-page, full-color summer newsletter featuring information about concerts, Party in the Park and other summer events and activities. It is scheduled for mailing to community stakeholders in the Beaverton area and will also be available at www.thprd.org and at all THPRD centers as well as the Administrative Office. The district produces four printed newsletters per year, one for each registration period, in addition to its monthly e-newsletter.

Community Partnerships

Geoff Roach, Director of Community Partnerships

1. Overview: The campaign remains on schedule. With secured grants, gifts and pledges to date, the campaign is beyond 52.6% of goal. Developments for February and March 2015 include:
 - A. Foundations
 - i. In February, a proposal submitted by THPF was discussed at the February 9 board meeting of a California-based family foundation. We have received word that there is interest in funding one of the defined amenities at the park. We are providing additional information to the foundation now for further decision making. A new foundation grant was submitted in March to the Oregon-based Collins Foundation. We will know more toward the end of this summer.
 - ii. Application submittal schedule for emerging foundations is understood.
 - a. Working with a targeted list of emerging foundations now.
 - b. Strategic cultivation of the next two priority foundations is proceeding.
 - B. Individual donor prospects
 - i. Calls and meetings with donor prospects continue and a new gift was secured in March.
 - ii. Nearly all gift pledges that were due December 2014 are accounted for now.
 - C. The Program Summit held in February at Providence Park was cohosted by THPRD and the Portland Timbers. Over 40 professionals serving people with disabilities and injuries gathered to discuss partnering and programming for the new park. A committed subset of partners, experts from other nonprofit and government service providers, have expanded THPRD's Champions Too Steering Committee to design programming at the park and elsewhere that will best serve our community.

Aquatics

Sharon Hoffmeister, Superintendent of Aquatic Program Services

1. We had a busy spring break at the pools. Aloha's scheduled pool closure to replace the concrete platform underneath the pump was successful and the pool reopened on time. The Aquatic Center offered a Lifeguard Training course and a Junior Lifeguarding class, which gives us a strong start for training potential new staff in time for summer. We will have more training opportunities this spring with three additional Lifeguard Training classes and three additional Junior Lifeguarding classes scheduled.
2. Sunset and Aloha have had a great response to the Women's Only swims, with an average attendance of 25. Aloha Swim Center has one more Women's Only swim scheduled this season on April 18. Staff are working on coordinating additional swims for the summer.

Maintenance

Jon Campbell, Superintendent of Maintenance Operations

1. Maintenance staff replaced the 80' x 40' outdoor basketball asphalt pad at Carolwood Park. The pad reached the end of its useful life and was replaced with a new 8" base of crushed rock and a 2" overlay of Class C asphalt.
2. A 3' high by 100' long retaining wall was installed on the west side of the tennis courts at Summercrest Park, at the base of the courts next to the sidewalk along SW 165th Avenue. The wall will prevent the rock from sliding onto the sidewalk, as well as protect the courts' surfaces from cracking or becoming compromised in the future.
3. Three sections of the Sunset Swim Center pervious parking lot are showing signs of potential failure. The contractor will replace the sections at his own cost. Maintenance staff is coordinating the project work schedule with the center supervisor and field programmers, which will be decided at the April 21 pre-construction meeting.

Natural Resources & Trails Management

Bruce Barbarasch, Superintendent of Natural Resources & Trails Management

1. Greenway Loop Trail. A loop trail off the Fanno Creek Trail in Greenway has been flooded due to beaver activity. Staff conducted outreach activities and a public survey to evaluate options for access.
2. Cooper Mountain Nature Park Kiosk. A new kiosk was installed by Metro staff with their levy funds. It replaces four separate items that used to be at the main trailhead.
3. Nature Revealed. The last of the bond-funded interpretive natural art installations has been completed along the Rock Creek Greenway. A grand opening for all five installations will occur in late spring.

Planning & Development

Steve Gulgren, Superintendent of Planning & Development

1. Bond Land Acquisition/House Demolitions: Tualatin Valley Fire & Rescue (TVF&R) ultimately decided that they would not use the Wenzel houses on SW 184th Avenue, adjacent to Arnold Park, for a training practice burn as was originally scheduled. Therefore, staff contacted Dan Riehl Excavating, Inc., to provide a change order to include demolishing the houses and garage and to haul away the additional debris. The demolition work started at the end of February, and was completed on March 13.

Certified Environmental Consulting, LLC., has been awarded the asbestos testing contract for nine additional properties scheduled for demolition. Testing is anticipated to begin the week of April 6. The results of the testing will be included in a Request for Qualifications (RFQ) for demolition of the structures. Staff anticipates the RFQ will be complete and mailed out by mid-to-late April and that demolition of the properties will take place this summer.

Programs & Special Activities

Lisa Novak, Superintendent of Programs & Special Activities

1. RFPs for the ADA Access Audit of district facilities and property will be issued on April 13, 2015.
2. Volunteer Services and Special Events staff are busy with the details of the summer event season: booking bands, working with community partners, working on sponsorships, recruiting volunteers, and soliciting food vendors.
3. Spring classes have begun and the Elsie Stuhr Center is busy. Maintenance staff did some painting, heavy cleaning and floor refinishing during spring break - the center is sparkling!

Recreation

Eric Owens, Superintendent of Recreation

1. Garden Home Recreation Center had a 7% increase in registration numbers from winter 2014 to winter 2015.
2. Cedar Hills Recreation Center hosted the "Principal's Coffee Hour" on March 10 with William Walker Principal Joan Hulquist and a group of Spanish-speaking parents. Parents toured the building and received information about the programs at Cedar Hills and THPRD. They also were given assistance in obtaining a THPRD registration card as well as help with registering for classes. Julia Cohen, school counselor, and Juan Mercado of THPRD were on hand to translate for non-English speaking parents.
3. Conestoga Recreation & Aquatic Center staff has completed the Programming Standards manual for the facility. This includes standards for facility entrances, bulletin boards, classrooms, storage spaces, recreation program goals and objectives, and instructor toolkits. The purpose of the manual is to provide staff with expectations for program content and staff and facility presentation standards.
4. Cedar Hills Recreation Center's Gymnastics Level IV class won the 1st place team award at the annual Shamrock Invitational Gymnastics Meet at the Gym Nest. The six team members received a number of individual awards that included: 5/1st place, 7/2nd place, 8/3rd, 1/4th place and 3/5th place awards for a total of 24 medals.

Security Operations

Mike Janin, Superintendent of Security Operations

1. The Superintendent of Security Operations represented THPRD this year as a guest speaker at the Governor's Occupational, Safety and Health Conference in Portland. The presentation covered trail improvements and safe routes to schools, identified the types of graffiti and the importance of quick cleanup, and the laws and procedures for removing transient camps.
2. Efforts continue to identify encroachments and restore property back to the district. On average, several encroachments are investigated per month, from simple raised vegetable gardens and re-landscaped/extension of yards, to improperly built fences or vehicles, RVs and boats stored on district land. Our approach is always cautious and the responsible party is left with a good understanding of why we are vigilant in this area.

Sports

Scott Brucker, Superintendent of Sports

1. Fields: Youth and high school lacrosse permits began the first week of March and recreational soccer permits began the first of April. Baseball and softball permits started on a staggered schedule throughout March and early April depending on the league and organization.

Business Services

Cathy Brucker, Finance Manager

Nancy Hartman Noye, Human Resources Manager

Mark Hokkanen, Risk & Contract Manager

Seth Reeser, Operations Analysis Manager

Phil Young, Information Services Manager

1. The disaster recovery program for the district's financial software is now operational. The operating system and data are stored offsite, allowing full access to operations within 24 hours via internet should our systems go down due to an unforeseen event. Furthermore, staff will be able to efficiently restore district financial operations once the internal servers are available.
2. The Governor's Occupational Safety and Health (GOSH) Conference was attended by 14 members of THPRD's Risk Management Steering Committee and the four safety committees. This was the largest representation by the district at this biennial event. GOSH is the largest safety and health conference in the Northwest, and brings employers, insurers, and labor groups together to focus on improving safety and health in Oregon workplaces. It is through this effort that Oregon has some of the lowest workers' compensation rates in the country.
3. Spring class registration began on Saturday, March 7, with both phone-in registration and web registration beginning at 8 am. Staff responded to 660 phone calls on Saturday, with 20% of the day's invoices, 15% of the revenue and 17% of the classes being processed by phone-in operators. Our website performed very well, processing 2,934 invoices on Saturday. During the first 15 minutes of registration, the website processed 46% of the invoices for the day. Also in the first 15 minutes, 218 classes reached their maximum enrollment; in total, 449 classes reached their maximum enrollment on opening day.
4. Operations analysis staff have projected that the new deluxe and general passes will hit their revenue target for the term. Based on this, the discounted three-month pass will be offered again in April.
5. Trainings on the new cancellation and residency verification procedures were held for front line staff. THPRD is reaching out to patrons via the activities guide, posters, flyers, website, online registration, phone registration, on the invoices, Facebook, Twitter, and the e-newsletter.

April

Sun

Mon

Tue

Wed

Thu

Fri

Sat

1

2

3

Underwater Egg Hunt
@ Conestoga

4

Spring Artisan
Bazaar, Egg Hunt &
Pancake Breakfast @
Cedar Hills

Spring Egg Hunt @
Garden Home

5

6

7

8

9

10

11

12

13

Board Meeting 7pm
@ Dryland/HMT

Stuhr Center
Advisory Committee
10am

14

Parks Advisory
Committee 6pm

15

16

Sports Advisory
Committee 1pm

17

18

Women Only Swim
@ Aloha Swim
Center

19

20

Budget Committee
Work Session 6pm
@ Manzanita Room/
Elsie Stuhr Center

21

Natural Resources &
Trails Advisory
Committees Joint
Meeting

22

23

24

25

Spring Native Plant
Sale @ Tualatin Hills
Nature Center

26

27

28

29

30

2015

May

Sun

Mon

Tue

Wed

Thu

Fri

Sat

1

2

3

4

Board Meeting 7pm
@ Dryland/HMT

5

6

Aquatics Advisory
Committee 7pm

7

8

Happy Mother's Day
Dessert Party @ Stuhr
Center

9

10

11

12

Parks Advisory
Committee 6pm

13

14

15

16

17

18

Stuhr Center
Advisory Committee
10am

Budget Committee
Meeting 6:30pm @
Dryland/HMT

19

Trails Advisory
Committee 7pm

20

21

Sports Advisory
Committee 1pm

Recreation Advisory
Committee 7pm

22

23

24

25

HOLIDAY

26

Natural Resources
Advisory Committee
6:30pm

27

28

29

30

31

2015

June

<i>Sun</i>	<i>Mon</i>	<i>Tue</i>	<i>Wed</i>	<i>Thu</i>	<i>Fri</i>	<i>Sat</i>
	1	2	3 Aquatics Advisory Committee 7pm	4	5	6
7	8 Board Meeting 7pm @ Dryland/HMT Stuhr Center Advisory Committee 10am	9 Parks Advisory Committee 6pm	10	11	12	13
14	15	16 Trails Advisory Committee 7pm	17	18 Sports Advisory Committee 1pm Recreation Advisory Committee 7pm	19	20
21	22 Board Meeting 7pm @ Dryland/HMT	23 Natural Resources Advisory Committee 6:30pm	24	25	26	27
28	29	30				

2015

Tualatin Hills Park and Recreation District
Monthly Capital Project Report
Estimated Cost vs. Budget
Through 2/28/2015

Description	Project Budget				Project Expenditures			Estimated Total Costs			Est. Cost (Over) Under Budget		
	Prior Year Budget Amount	Budget Carryover to Current Year	New Funds Budgeted in Current Year	Cumulative Project Budget	Current Year Budget Amount	Expended Prior Years	Expended Year-to-Date	Estimated Cost to Complete	Basis of Estimate	Project Cumulative	Current Year	Project Cumulative	Current Year
	(1)	(2)	(3)	(1+3)	(2+3)	(4)	(5)	(6)		(4+5+6)	(5+6)		
GENERAL FUND													
CAPITAL OUTLAY DIVISION													
<u>CARRY FORWARD PROJECTS</u>													
JQAY House Renovation	100,000	1,800	-	100,000	1,800	87,371	-	1,800	Budget	89,171	1,800	10,829	-
Challenge Grant Competitive Fund	45,000	45,000	-	45,000	45,000	-	-	45,000	Budget	45,000	45,000	-	-
Signage Master Plan	75,000	53,000	-	75,000	53,000	70,108	32,978	18,322	Award	121,408	51,300	(46,408)	1,700
Fanno Creek Trail Management	62,000	20,400	-	62,000	20,400	39,409	2,638	17,762	Budget	59,809	20,400	2,191	-
Pedestrian Pathways (7 sites)	88,414	88,414	-	88,414	88,414	67,063	-	-	Complete	67,063	-	21,351	88,414
Concrete Sidewalks (6 sites)	50,200	50,200	-	50,200	50,200	27,875	8,000	-	Complete	35,875	8,000	14,325	42,200
Stuhr Parking Lot Crack Repair	26,666	16,166	-	26,666	16,166	10,500	16,166	-	Complete	26,666	16,166	-	-
ADA Wonderland Park Playstructure cmp	13,200	13,200	-	13,200	13,200	13,200	-	-	Complete	13,200	-	-	13,200
Playstructure - Wonderland Park	113,000	113,000	-	113,000	113,000	98,806	5,584	-	Complete	104,390	5,584	8,610	107,416
FC Greenway Erosion Solution	75,000	60,000	60,000	135,000	120,000	41,972	53,944	-	Complete	95,916	53,944	39,084	66,056
Aqua Climb	9,180	9,180	-	9,180	9,180	-	-	9,180	Budget	9,180	9,180	-	-
Aquatic Center Dive Tower Louvers	9,500	9,500	-	9,500	9,500	-	-	9,500	Budget	9,500	9,500	-	-
Jenkins Lead Abatement (Main House)	9,000	9,000	-	9,000	9,000	-	-	9,000	Budget	9,000	9,000	-	-
G-Max Testing Unit	14,000	14,000	-	14,000	14,000	-	-	-	Canceled	-	-	14,000	14,000
HMT Tennis Center Roof	868,000	868,000	-	868,000	868,000	1,723	2,055	864,222	Budget	868,000	866,277	-	1,723
Info System Workstations & Notebooks	67,000	35,000	-	67,000	35,000	32,213	-	35,000	Budget	67,213	35,000	(213)	-
Jenkins Estate Irrigation	-	-	-	-	-	1,778	2,275	-	Complete	4,053	2,275	(4,053)	(2,275)
FCSC Remodel	132,000	-	-	132,000	-	94,235	20,143	2,670	Award	117,048	22,813	14,952	(22,813)
Energy Savings Performance Contract Phase 2	674,736	-	-	674,736	-	416,486	-	40,300	Award	456,786	40,300	217,950	(40,300)
TOTAL CARRYOVER PROJECTS	2,431,896	1,405,860	60,000	2,491,896	1,465,860	1,002,738	143,783	1,052,756		2,199,277	1,196,539	292,619	269,321
<u>ATHLETIC FACILITY REPLACEMENT</u>													
Synthetic Turf - Aloha High	-	-	160,000	160,000	160,000	-	156,310	-	Complete	156,310	156,310	3,690	3,690
Tennis Court Resurfacing & Crack Repair	-	-	91,000	91,000	91,000	-	86,926	4,240	Award	91,166	91,166	(166)	(166)
Carolwood Park-Basketball Court Resurface	-	-	16,000	16,000	16,000	-	-	21,106	Award	21,106	21,106	(5,106)	(5,106)
Somerset Park Hitting Wall	-	-	10,000	10,000	10,000	-	7,450	-	Complete	7,450	7,450	2,550	2,550
Tennis Stadium Marble Panels	-	-	-	-	-	-	5,592	-	Complete	5,592	5,592	(5,592)	(5,592)
Sinkhole Repair - Outdoor Tennis Courts	-	-	-	-	-	-	4,959	-	Complete	4,959	4,959	(4,959)	(4,959)
TOTAL ATHLETIC FACILITY REPLACEMENT			277,000	277,000	277,000	-	261,237	25,346		286,583	286,583	(9,583)	(9,583)
<u>ATHLETIC FACILITY IMPROVEMENT</u>													
Summercrest Park Tennis Bank	-	-	6,500	6,500	6,500	-	-	6,600	Award	6,600	6,600	(100)	(100)
Synthetic Turf Field-Conestoga Middle School ** (supplemental budget adjustment in March, 2015)	-	-	-	-	-	-	-	650,000	**	650,000	650,000	(650,000)	(650,000)
TOTAL ATHLETIC FACILITY IMPROVEMENT			6,500	6,500	6,500	-	-	656,600	Budget	656,600	656,600	(650,100)	(650,100)
<u>PARK AND TRAIL REPLACEMENTS</u>													
Play Equipment (2 sites)	-	-	87,468	87,468	87,468	-	34,066	53,402	Budget	87,468	87,468	-	-
Irrigation & Drainage System Repairs	-	-	25,000	25,000	25,000	-	16,236	8,764	Budget	25,000	25,000	-	-
Trash Cans in Parks	-	-	5,000	5,000	5,000	-	-	5,000	Budget	5,000	5,000	-	-
Dog Bag Dispensers	-	-	10,000	10,000	10,000	-	10,128	-	Complete	10,128	10,128	(128)	(128)
Canopies	-	-	2,860	2,860	2,860	-	2,600	-	Complete	2,600	2,600	260	260
Burnsridge Park Picnic Table	-	-	2,500	2,500	2,500	-	2,500	-	Complete	2,500	2,500	-	-
Fences (2 sites)	-	-	4,500	4,500	4,500	-	3,218	-	Complete	3,218	3,218	1,282	1,282
Portable Toilet Enclosures (5)	-	-	5,000	5,000	5,000	-	1,860	3,140	Budget	5,000	5,000	-	-
Asphalt Path Replacement & Repairs (6 sites)	-	-	172,707	172,707	172,707	-	192,332	9,900	Award	202,232	202,232	(29,525)	(29,525)
Concrete Sidewalks (4 sites) & Curbing (2 sites)	-	-	38,117	38,117	38,117	-	36,499	-	Complete	36,499	36,499	1,618	1,618
Greenway Park Boardwalk Design Phase 1	-	-	40,000	40,000	40,000	-	34,479	7,301	Award	41,780	41,780	(1,780)	(1,780)
Signage (various sites)	-	-	26,400	26,400	26,400	-	984	25,416	Budget	26,400	26,400	-	-
TOTAL PARK AND TRAIL REPLACEMENTS			419,552	419,552	419,552	-	334,902	112,923		447,825	447,825	(28,273)	(28,273)
<u>PARK AND TRAIL IMPROVEMENTS</u>													
Memorial Benches	-	-	8,000	8,000	8,000	-	4,743	3,257	Budget	8,000	8,000	-	-
ODOT Grant-Westside Trail#18 easement	-	-	150,000	150,000	150,000	-	2,246	133,492	Budget	135,738	135,738	14,262	14,262
Opinionator - Patron Feedback	-	-	2,500	2,500	2,500	-	1,360	1,140	Budget	2,500	2,500	-	-
Raleigh Park Shelter- LWCF Grant	-	-	50,000	50,000	50,000	-	-	-	Cancelled	-	-	50,000	50,000
Terra Linda Park Shelter-LGGP Grant	-	-	40,000	40,000	40,000	-	-	-	Cancelled	-	-	40,000	40,000
Roger Tilbury Phase 2-LGGP Grant	-	-	212,500	212,500	212,500	-	-	-	Cancelled	-	-	212,500	212,500
TOTAL PARK AND TRAIL IMPROVEMENTS			463,000	463,000	463,000	-	8,349	137,889		146,238	146,238	316,762	316,762

Tualatin Hills Park and Recreation District
Monthly Capital Project Report
Estimated Cost vs. Budget
Through 2/28/2015

Description	Project Budget				Project Expenditures		Estimated Total Costs				Est. Cost (Over) Under Budget		
	Prior Year Budget Amount	Budget Carryover to Current Year	New Funds Budgeted in Current Year	Cumulative Project Budget	Current Year Budget Amount	Expended Prior Years	Expended Year-to-Date	Estimated Cost to Complete	Basis of Estimate	Project Cumulative	Current Year	Project Cumulative	Current Year
	(1)	(2)	(3)	(1+3)	(2+3)	(4)	(5)	(6)		(4+5+6)	(5+6)		
CHALLENGE GRANTS													
Program Facility Challenge Grants			97,500	97,500	97,500	-	14,187	83,313	Budget	97,500	97,500	-	-
TOTAL CHALLENGE GRANTS			97,500	97,500	97,500	-	14,187	83,313		97,500	97,500	-	-
BUILDING REPLACEMENTS													
Cardio/Weight Room Equipment Replacement			40,000	40,000	40,000	-	-	40,000	Award	40,000	40,000	-	-
Aquatic Center Roof			800,000	800,000	800,000	-	54,990	745,010	Budget	800,000	800,000	-	-
Aquatic Center Pool Deck			267,250	267,250	267,250	-	-	267,250	Budget	267,250	267,250	-	-
Aquatic Center Resurface Pool & Tile Repair			241,803	241,803	241,803	-	1,920	239,883	Budget	241,803	241,803	-	-
Aquatic Center Electronic HVAC Controls			115,485	115,485	115,485	-	6,658	108,827	Budget	115,485	115,485	-	-
Aloha Main Circulation Pump Platform			7,450	7,450	7,450	-	-	7,990	Award	7,990	7,990	(540)	(540)
Replacement Pump/Motor (2)			24,600	24,600	24,600	-	2,400	18,000	Award	20,400	20,400	4,200	4,200
Diatomaceous Earth Fltr Cvr-2			5,775	5,775	5,775	-	7,059	-	Complete	7,059	7,059	(1,284)	(1,284)
Beaverton Pool Gutter-line			5,600	5,600	5,600	-	6,090	-	Complete	6,090	6,090	(490)	(490)
Aquatic Center Gutters, Chm Cntrlr, Drain Covers			18,236	18,236	18,236	-	7,513	10,723	Budget	18,236	18,236	-	-
Aquatic Center 16' Dive Board			8,613	8,613	8,613	-	8,240	-	Complete	8,240	8,240	373	373
Aloha Splash Water Slide			5,471	5,471	5,471	-	3,935	-	Complete	3,935	3,935	1,536	1,536
Harman Lane Anchors			6,290	6,290	6,290	-	6,290	-	Complete	6,290	6,290	-	-
Lookout Platform Chair			7,132	7,132	7,132	-	5,615	-	Complete	5,615	5,615	1,517	1,517
Aloha Portable Slide			5,470	5,470	5,470	-	-	5,470	Budget	5,470	5,470	-	-
AC Track Drinking Fountain			1,000	1,000	1,000	-	645	-	Complete	645	645	355	355
Schlottmann Hot Water Heater			1,100	1,100	1,100	-	514	-	Complete	514	514	586	586
Cedar Hills Boiler Room Drains			2,760	2,760	2,760	-	2,760	-	Complete	2,760	2,760	-	-
CRAC Weld Boiler Heat Exchanger Pipes			2,000	2,000	2,000	-	330	1,670	Budget	2,000	2,000	-	-
AC Shower Mixers & Parts			1,600	1,600	1,600	-	1,575	-	Complete	1,575	1,575	25	25
NPIC Interior Restroom Sinks & Parts			1,100	1,100	1,100	-	330	770	Budget	1,100	1,100	-	-
SSC Asbestos Abatement & Recover Piping			9,200	9,200	9,200	-	-	9,200	Budget	9,200	9,200	-	-
Carpet (AC & Dryland)			5,210	5,210	5,210	-	960	4,250	Budget	5,210	5,210	-	-
Interior Paint (TC & NP)			2,000	2,000	2,000	-	1,629	-	Complete	1,629	1,629	371	371
NPIC Reseal Ceramic Tile Flooring			6,000	6,000	6,000	-	-	5,320	Award	5,320	5,320	680	680
Wood Floors / Court Refinishing			17,400	17,400	17,400	-	16,119	1,600	Award	17,719	17,719	(319)	(319)
GH Tile Floor Replacement			1,000	1,000	1,000	-	-	1,000	Budget	1,000	1,000	-	-
AC Gym Wood Floors Screening/Resurfacing			10,500	10,500	10,500	-	10,160	-	Complete	10,160	10,160	340	340
NPIC Interior Restrooms Flooring			4,500	4,500	4,500	-	-	4,319	Award	4,319	4,319	182	182
Stuhr Ctr Ice Machine			2,050	2,050	2,050	-	899	-	Complete	899	899	1,151	1,151
AC Socket Plates, Relamp & Blinds			10,674	10,674	10,674	-	8,356	1,468	Award	9,824	9,824	850	850
TC Relamp / Washer & Dryer			7,500	7,500	7,500	-	5,000	1,499	Award	6,499	6,499	1,001	1,001
Harman Window Shades			1,611	1,611	1,611	-	1,890	-	Complete	1,890	1,890	(279)	(279)
Furnace (CH & GH)			7,500	7,500	7,500	-	-	7,500	Budget	7,500	7,500	-	-
Adm Office Rooftop Unit & Duct Heater			13,648	13,648	13,648	-	-	13,648	Budget	13,648	13,648	-	-
AC HVAC Electrical Repairs			4,000	4,000	4,000	-	230	3,770	Budget	4,000	4,000	-	-
NPIC Exterior Restrooms HVAC Fans			2,500	2,500	2,500	-	1,934	-	Complete	1,934	1,934	566	566
Camp Riv Upper Pavilion Exterior Painting			1,000	1,000	1,000	-	-	1,000	Budget	1,000	1,000	-	-
CH Downspouts Replacement			2,510	2,510	2,510	-	2,510	-	Complete	2,510	2,510	-	-
Fanno Farmhouse Picket Fence			2,500	2,500	2,500	-	482	2,018	Budget	2,500	2,500	-	-
Gutters (2 sites)			4,000	4,000	4,000	-	-	8,493	Award	8,493	8,493	(4,493)	(4,493)
Greenway Park - Paint Structure & Replace Gutters			3,100	3,100	3,100	-	3,479	-	Complete	3,479	3,479	(379)	(379)
JEN Roof & Veranda Repairs			5,200	5,200	5,200	-	6,488	1,000	Budget	7,488	7,488	(2,288)	(2,288)
Tallac Terrace Park Play Pad Roof Repair			2,000	2,000	2,000	-	1,710	-	Complete	1,710	1,710	290	290
ASC Exterior Painting			14,889	14,889	14,889	-	-	14,889	Budget	14,889	14,889	-	-
NPIC Entrance Light Replacement & Interior Relamp			1,500	1,500	1,500	-	1,306	-	Complete	1,306	1,306	194	194
Fanno Farmhouse ADA Ramp			19,000	19,000	19,000	-	-	19,000	Budget	19,000	19,000	-	-
FCSC Roof Repairs & Consultation			18,096	18,096	18,096	-	-	18,096	Budget	18,096	18,096	-	-
AC Alcove Roof			11,500	11,500	11,500	-	12,412	-	Complete	12,412	12,412	(912)	(912)
JEN Stable Septic Tank			19,000	19,000	19,000	-	21,950	-	Complete	21,950	21,950	(2,950)	(2,950)
AC Compressor Replacement @ Stuhr Ctr			-	-	-	-	5,449	-	Complete	5,449	5,449	(5,449)	(5,449)

Tualatin Hills Park and Recreation District
Monthly Capital Project Report
Estimated Cost vs. Budget
Through 2/28/2015

Description	Project Budget					Project Expenditures		Estimated Total Costs				Est. Cost (Over) Under Budget	
	Prior Year Budget Amount	Budget Carryover to Current Year	New Funds Budgeted in Current Year	Cumulative Project Budget	Current Year Budget Amount	Expended Prior Years	Expended Year-to-Date	Estimated Cost to Complete	Basis of Estimate	Project Cumulative	Current Year	Project Cumulative	Current Year
	(1)	(2)	(3)	(1+3)	(2+3)	(4)	(5)	(6)		(4+5+6)	(5+6)		
Fanno Farmhouse Sewer Line	-	-	-	-	-	-	3,873	-	Complete	3,873	3,873	(3,873)	(3,873)
50 Mtr Pool Circulation Pump	-	-	-	-	-	-	7,453	-	Complete	7,453	7,453	(7,453)	(7,453)
Tennis Air Structures Reconst.	-	-	-	-	-	-	164,095	(163,095)	Award	1,000	1,000	(1,000)	(1,000)
CRA Boiler Valve Replacement	-	-	-	-	-	-	3,845	-	Complete	3,845	3,845	(3,845)	(3,845)
CRA HVAC Unit (damage repair)	-	-	-	-	-	-	5,698	-	Complete	5,698	5,698	(5,698)	(5,698)
GH HVAC Air Handler	-	-	-	-	-	-	3,401	-	Complete	3,401	3,401	(3,401)	(3,401)
SSC Surge Valve Repair	-	-	-	-	-	-	3,965	-	Complete	3,965	3,965	(3,965)	(3,965)
JEN Furnace Replacement	-	-	-	-	-	-	3,726	-	Complete	3,726	3,726	(3,726)	(3,726)
SSC Circulation Pump Motor	-	-	-	-	-	-	3,180	-	Complete	3,180	3,180	(3,180)	(3,180)
TOTAL BUILDING REPLACEMENTS			1,778,323	1,778,323	1,778,323	-	419,063	1,400,567		1,819,631	1,819,631	(41,308)	(41,308)
BUILDING IMPROVEMENTS													
FCSC Safety Shower for HAZMAT Locker			6,500	6,500	6,500	-	-	6,325	Award	6,325	6,325	175	175
HMT Comm & Dev - Front Office Improvement			5,000	5,000	5,000	-	5,000	-	Complete	5,000	5,000	-	-
Administration Office Reconfiguration			110,000	110,000	110,000	-	159,888	3,089	Award	162,977	162,977	(52,977)	(52,977)
TOTAL BUILDING IMPROVEMENTS			121,500	121,500	121,500	-	164,888	9,414		174,302	174,302	(52,802)	(52,802)
ADA PROJECTS													
ASC Power Door Operator			2,183	2,183	2,183	-	-	2,183	Budget	2,183	2,183	-	-
GH ADA Sidewalk Addition			9,000	9,000	9,000	-	9,000	-	Complete	9,000	9,000	-	-
McMillan Park ADA Components			20,300	20,300	20,300	-	-	20,300	Budget	20,300	20,300	-	-
TOTAL ADA PROJECTS			31,483	31,483	31,483	-	9,000	22,483		31,483	31,483	-	-
TOTAL CAPITAL OUTLAY DIVISION	2,431,896	1,405,860	3,254,858	5,686,754	4,660,718	1,002,738	1,355,409	3,501,291		5,859,439	4,856,701	(172,685)	(195,983)
INFORMATION SERVICES DEPARTMENT													
INFORMATION TECHNOLOGY REPLACEMENTS													
Workstations/Notebooks			8,500	8,500	8,500	-	987	7,513	Budget	8,500	8,500	-	-
Server Replacements			35,000	35,000	35,000	-	30,837	4,164	Award	35,001	35,001	(1)	(1)
LAN/WAN Replacement			5,000	5,000	5,000	-	2,119	2,881	Budget	5,000	5,000	-	-
Printers/Network Printers			5,000	5,000	5,000	-	2,700	-	Complete	2,700	2,700	2,300	2,300
TOTAL INFORMATION TECHNOLOGY REPLACEMENTS			53,500	53,500	53,500	-	36,643	14,558		51,201	51,201	2,299	2,299
INFORMATION TECHNOLOGY IMPROVEMENTS													
Misc. Application Software			20,000	20,000	20,000	-	18,784	1,216	Budget	20,000	20,000	-	-
Workstation and Phone			14,500	14,500	14,500	-	6,038	8,462	Budget	14,500	14,500	-	-
Kronos Upgrade			22,000	22,000	22,000	-	8,275	13,905	Award	22,180	22,180	(180)	(180)
Virtual Desktop Infrastructure			79,500	79,500	79,500	-	69,263	5,736	Budget	74,999	74,999	4,501	4,501
FCSC Server Rack/UPS			7,500	7,500	7,500	-	7,313	-	Complete	7,313	7,313	187	187
FCSC Server Room Security			4,800	4,800	4,800	-	4,844	-	Complete	4,844	4,844	(44)	(44)
TOTAL INFORMATION TECHNOLOGY IMPROVEMENTS			148,300	148,300	148,300	-	114,517	29,319		143,836	143,836	4,464	4,464
TOTAL INFORMATION SYSTEMS DEPARTMENT	-	-	201,800	201,800	201,800	-	151,160	43,877		195,037	195,037	6,763	6,763
MAINTENANCE DEPARTMENT													
FLEET REPLACEMENTS													
72" Mowers (3)			42,000	42,000	42,000	-	41,920	-	Complete	41,920	41,920	80	80
Tire Balancer			8,500	8,500	8,500	-	9,056	-	Complete	9,056	9,056	(556)	(556)
Electric Utility Vehicle			12,500	12,500	12,500	-	11,677	-	Complete	11,677	11,677	823	823
52" Mowers (2)			14,400	14,400	14,400	-	14,196	-	Complete	14,196	14,196	204	204
52" Mower & 2 Trailers			15,500	15,500	15,500	-	8,098	10,757	Award	18,855	18,855	(3,355)	(3,355)
Large Rotary Mower			62,000	62,000	62,000	-	-	59,661	Award	59,661	59,661	2,339	2,339
4x4 SUV Hybrid			43,000	43,000	43,000	-	28,079	-	Complete	28,079	28,079	14,921	14,921
Chipper			45,000	45,000	45,000	-	44,344	-	Complete	44,344	44,344	656	656
TOTAL FLEET REPLACEMENTS			242,900	242,900	242,900	-	157,370	70,418		227,788	227,788	15,112	15,112

Tualatin Hills Park and Recreation District
Monthly Capital Project Report
Estimated Cost vs. Budget
Through 2/28/2015

Description	Project Budget				Project Expenditures		Estimated Total Costs				Est. Cost (Over) Under Budget		
	Prior Year Budget Amount	Budget Carryover to Current Year	New Funds Budgeted in Current Year	Cumulative Project Budget	Current Year Budget Amount	Expended Prior Years	Expended Year-to-Date	Estimated Cost to Complete	Basis of Estimate	Project Cumulative	Current Year	Project Cumulative	Current Year
	(1)	(2)	(3)	(1+3)	(2+3)	(4)	(5)	(6)		(4+5+6)	(5+6)		
BUILDING MAINTENANCE EQUIPMENT REPLACEMENTS													
CHRC Vacuums & Battery Packs			2,600	2,600	2,600	-	2,598	-	Complete	2,598	2,598	2	2
Conestoga Floor Scrubber			1,900	1,900	1,900	-	1,840	-	Complete	1,840	1,840	60	60
Stuhr Center Wet Dry Vacuum			1,000	1,000	1,000	-	715	-	Complete	715	715	285	285
AC Vacuum & Batteries			1,200	1,200	1,200	-	1,088	-	Complete	1,088	1,088	112	112
TC Sweeper Batteries & Parts			1,100	1,100	1,100	-	755	-	Complete	755	755	345	345
NPIC Pressure Washer & Wand			1,000	1,000	1,000	-	999	-	Complete	999	999	1	1
TOTAL BLDG MAINT EQUIPMENT REPLACEMENTS			8,800	8,800	8,800	-	7,995	-		7,995	7,995	805	805
BUILDING MAINTENANCE IMPROVEMENTS													
Preventive Drain Emergency Response			11,340	11,340	11,340	-	-	6,632	Award	6,632	6,632	4,708	4,708
Data Collection Tablets			1,200	1,200	1,200	-	985	-	Complete	985	985	215	215
TOTAL BUILDING MAINT IMPROVEMENTS			12,540	12,540	12,540	-	985	6,632		7,617	7,617	4,923	4,923
TOTAL MAINTENANCE DEPARTMENT	-	-	264,240	264,240	264,240	-	166,350	77,050		243,400	243,400	20,840	20,840
GRAND TOTAL GENERAL FUND	2,431,896	1,405,860	3,720,898	6,152,794	5,126,758	1,002,738	1,672,920	3,622,218		6,297,876	5,295,138	(145,082)	(168,380)
SDC FUND													
LAND ACQUISITION													
Land Acquisition (FY 14)	790,000	790,000	-	790,000	790,000	-	6,736	783,264	Budget	790,000	790,000	-	-
Land Acquisition - North Bethany	-	-	1,670,168	1,670,168	1,670,168	-	-	1,670,168	Budget	1,670,168	1,670,168	-	-
Summer Falls Property Acquisition	-	-	329,832	329,832	329,832	-	329,869	-	Complete	329,869	329,869	(37)	(37)
TOTAL LAND ACQUISITION	790,000	790,000	2,000,000	2,790,000	2,790,000	-	336,605	2,453,432		2,790,037	2,790,037	(37)	(37)
DEVELOPMENT/IMPROVEMENT PROJECTS													
Fanno Creek Trail / Scholls Greenwood Inn	2,011,950	60,000	-	2,011,950	60,000	1,946,487	8,014	51,986	Budget	2,006,487	60,000	5,463	-
Bonny Slope / BSD Trail Development	175,000	175,000	325,000	500,000	500,000	-	-	500,000	Budget	500,000	500,000	-	-
MTIP Grant Match - Westside Trail #18	82,205	19,275	201,125	283,330	220,400	73,266	18,248	202,152	Budget	293,666	220,400	(10,336)	-
Graf Meadows Park - Trail Connection	600,000	447,500	-	600,000	447,500	143,244	337,794	45,500	Award	526,538	383,294	73,462	64,206
Future Dog Park Construction - Site to be determined	50,000	50,000	-	50,000	50,000	-	-	50,000	Budget	50,000	50,000	-	-
Fanno Creek Trail - Hall Blvd Crossing	384,250	35,500	50,000	434,250	85,500	176,753	292	40,000	Award	217,045	40,292	217,205	45,208
Timberland Park - Project Management	34,000	17,750	-	34,000	17,750	-	29,566	4,075	Budget	33,641	33,641	359	(15,891)
Jackie Husen Park Expansion - Planning	-	-	83,500	83,500	83,500	-	68,335	32,778	Award	101,113	101,113	(17,613)	(17,613)
Connect OR Grant / Waterhouse Trail Segment 4	-	-	200,000	200,000	200,000	-	-	-	Canceled	-	-	200,000	200,000
LWCF Grant / Raleigh Park Shelter	-	-	50,000	50,000	50,000	-	-	-	Canceled	-	-	50,000	50,000
LGGP Grant / Terra Linda Park Shelter	-	-	40,000	40,000	40,000	-	-	-	Canceled	-	-	40,000	40,000
LGGP Grant / Roger Tilbury Park Phase 2	-	-	212,500	212,500	212,500	-	-	-	Canceled	-	-	212,500	212,500
Bethany Creek Falls 1 & 2 - Project Management	-	-	120,500	120,500	120,500	-	16,311	104,189	Budget	120,500	120,500	-	-
Bethany Terrace Trail #11 - Project Management	-	-	10,500	10,500	10,500	-	70	10,430	Budget	10,500	10,500	-	-
New Neighborhood Park Master Plans (2)	-	-	150,000	150,000	150,000	-	-	150,000	Budget	150,000	150,000	-	-
New Neighborhood Park Development	-	-	1,500,000	1,500,000	1,500,000	-	-	1,500,000	Budget	1,500,000	1,500,000	-	-
SW Quadrant Community Center - Site Feasibility	-	-	60,000	60,000	60,000	-	-	60,000	Budget	60,000	60,000	-	-
Natural Area Master Plan	-	-	100,000	100,000	100,000	-	-	100,000	Budget	100,000	100,000	-	-
Undesignated Projects	-	-	2,742,793	2,742,793	2,742,793	-	-	2,742,793	Budget	2,742,793	2,742,793	-	-
TOTAL DEVELOPMENT/IMPROVEMENT PROJECTS	3,337,405	805,025	5,845,918	9,183,323	6,650,943	2,339,750	478,630	5,593,903		8,412,283	6,072,533	771,040	578,410
GRAND TOTAL SDC FUND	4,127,405	1,595,025	7,845,918	11,973,323	9,440,943	2,339,750	815,235	8,047,335		11,202,320	8,862,570	771,003	578,373

KEY

- Budget Estimate based on original budget - not started and/or no basis for change
- Deferred Some or all of Project has been eliminated to reduce overall capital costs for year.
- Award Estimate based on Contract Award amount or quote price estimates
- Complete Project completed - no additional estimated costs to complete.

Tualatin Hills Park and Recreation District
Monthly Bond Capital Projects Report
Estimated Cost vs. Budget
Through 2/28/2015

Quad-rant	Project Code	Description	Project Budget			Project Expenditures			Estimated Cost to Complete	Basis of Estimate (Completed Phase)	Project Cumulative Cost	Variance		
			Initial Project Budget	Adjustments	Current Total Project Budget FY 14/15	Expended Prior Years	Expended Year-to-Date	Total Expended to Date				Est. Cost (Over) Under Budget	Cost Expended to Budget	Cost Expended to Total Cost
			(1)	(2)	(1+2)=(3)	(4)	(5)	(4+5)=(6)	(7)	(6+7)=(9)	(3-9) = (10)	(6) / (3)	(6)/(9)	
BOND CAPITAL PROJECTS FUND														
<u>New Neighborhood Parks Development</u>														
SE	91-901	AM Kennedy Park & Athletic Field	1,285,250	50,470	1,335,720	1,686,530	-	1,686,530	-	Complete	1,686,530	(350,810)	126.3%	100.0%
SW	91-902	Barsotti Park & Athletic Field	1,285,250	27,134	1,312,384	1,258,105	-	1,258,105	-	Complete	1,258,105	54,279	95.9%	100.0%
NW	91-903	Hansen Ridge Park (formerly Kaiser Ridge)	771,150	16,035	787,185	753,743	-	753,743	-	Complete	753,743	33,442	95.8%	100.0%
SW	91-904	Roy Dancer Park	771,150	16,308	787,458	651,272	-	651,272	-	Complete	651,272	136,186	82.7%	100.0%
NE	91-905	Roger Tilbury Park	771,150	19,335	790,485	291,348	531,747	823,095	98,693	Bid Award	921,788	(131,303)	104.1%	89.3%
Total New Neighborhood Parks Development			4,883,950	129,282	5,013,232	4,640,998	531,747	5,172,745	98,693		5,271,438	(258,206)	103.2%	98.1%
Authorized Use of Savings from Bond Issuance														
UND	Administration Category		-	258,206	258,206	-	-	-	-	N/A	-	258,206	n/a	n/a
Total New Neighborhood Parks Development			4,883,950	387,488	5,271,438	4,640,998	531,747	5,172,745	98,693		5,271,438	-	98.1%	98.1%
<u>Renovate & Redevelop Neighborhood Parks</u>														
NE	91-906	Cedar Mill Park, Trail & Athletic Fields	1,125,879	29,166	1,155,045	304,437	615,511	919,948	70,811	Bid Award	990,759	164,286	79.6%	92.9%
SE	91-907	Camille Park	514,100	28,634	542,734	585,471	-	585,471	-	Complete	585,471	(42,737)	107.9%	100.0%
NW	91-908	Somerset West Park	1,028,200	27,247	1,055,447	154,298	5,892	160,190	2,289,805	A&E	2,449,995	(1,394,548)	15.2%	6.5%
NW	91-909	Pioneer Park and Bridge Replacement	544,934	21,059	565,993	533,358	-	533,358	-	Complete	533,358	32,635	94.2%	100.0%
SE	91-910	Vista Brook Park	514,100	20,452	534,552	733,500	-	733,500	-	Complete	733,500	(198,948)	137.2%	100.0%
Total Renovate & Redevelop Neighborhood Parks			3,727,213	126,558	3,853,771	2,311,064	621,403	2,932,467	2,360,616		5,293,083	(1,439,312)	76.1%	55.4%
<u>New Neighborhood Parks Land Acquisition</u>														
NW	98-880-a	New Neighborhood Park - NW Quadrant (Biles)	1,500,000	28,467	1,528,467	1,041,404	-	1,041,404	-	Complete	1,041,404	487,063	68.1%	100.0%
NW	98-880-b	New Neighborhood Park - NW Quadrant (Living Hope)	-	-	-	1,060,935	6,789	1,067,724	-	Complete	1,067,724	(1,067,724)	n/a	100.0%
NW	98-880-c	New Neighborhood Park - NW Quadrant (Mitchell)	-	-	-	36,849	687,312	724,161	-	Complete	724,161	(724,161)	n/a	100.0%
NW	98-880-d	New Neighborhood Park - NW Quadrant (PGE)	-	-	-	62,712	-	62,712	-	Complete	62,712	(62,712)	n/a	100.0%
NE	98-745-a	New Neighborhood Park - NE Quadrant (Wilson)	1,500,000	27,735	1,527,735	525,108	3,589	528,697	-	Complete	528,697	999,038	34.6%	100.0%
NE	98-745-b	New Neighborhood Park - NE Quadrant (Lehman - formerly undesignated)	1,500,000	31,870	1,531,870	2,094,725	-	2,094,725	-	Complete	2,094,725	(562,855)	136.7%	100.0%
SW	98-746-a	New Neighborhood Park - SW Quadrant (Sterling Savings)	1,500,000	24,453	1,524,453	1,058,925	-	1,058,925	-	Complete	1,058,925	465,528	69.5%	100.0%
SW	98-746-b	New Neighborhood Park - SW Quadrant (Altishin)	-	-	-	546,751	390	547,141	-	Complete	547,141	(547,141)	n/a	100.0%
SW	98-746-c	New Neighborhood Park - SW Quadrant (Hung easement for Roy Dancer Park)	-	-	-	60,006	-	60,006	-	Complete	60,006	(60,006)	n/a	100.0%
SE	98-747	New Neighborhood Park - SE Quadrant (Cobb)	1,500,000	15,547	1,515,547	2,559,230	148	2,559,378	-	Complete	2,559,378	(1,043,831)	168.9%	100.0%
NW	98-748	New Neighborhood Park (North Bethany) (McGettigan)	1,500,000	23,667	1,523,667	1,629,690	-	1,629,690	-	Complete	1,629,690	(106,023)	107.0%	100.0%
UND	98-749	New Neighborhood Park - Undesignated	-	-	-	-	-	-	-	Reallocated	-	-	n/a	0.0%
Sub-total New Neighborhood Parks			9,000,000	151,739	9,151,739	10,676,335	698,228	11,374,563	-		11,374,563	(2,222,824)	124.3%	100.0%
Authorized Use of Savings from New Community Park														
UND	Land Acquisition Category		-	1,655,521	1,655,521	-	-	-	-	N/A	-	1,655,521	n/a	n/a
Authorized Use of Savings from Community Center / Community														
UND	Park Land Acquisition Category		-	508,104	508,104	-	-	-	-	N/A	-	567,303	n/a	n/a
Total New Neighborhood Parks			9,000,000	2,315,364	11,315,364	10,676,335	698,228	11,374,563	-		11,374,563	-	100.5%	100.0%
<u>New Community Park Development</u>														
SW	92-915	SW Quad Community Park & Athletic Field	7,711,500	209,033	7,920,533	167,374	229,260	396,634	11,258,635	Master Plan	11,655,269	(3,734,736)	5.0%	3.4%
Sub-total New Community Park Development			7,711,500	209,033	7,920,533	167,374	229,260	396,634	11,258,635		11,655,269	(3,734,736)	5.0%	3.4%
Outside Funding from Washington County / Metro														
UND	Transferred from Community Center Land Acquisition		-	384,251	384,251	-	-	-	-	N/A	-	384,251	n/a	n/a
Total New Community Park Development			7,711,500	593,284	8,304,784	167,374	229,260	396,634	11,258,635		11,655,269	(3,350,485)	4.8%	3.4%

Tualatin Hills Park and Recreation District
Monthly Bond Capital Projects Report
Estimated Cost vs. Budget
Through 2/28/2015

Quad- rant	Project Code	Description	Project Budget			Project Expenditures			Estimated Cost to Complete	Basis of Estimate (Completed Phase)	Project Cumulative Cost	Variance		
			Initial Project Budget	Adjustments	Current Total Project Budget FY 14/15	Expended Prior Years	Expended Year-to-Date	Total Expended to Date				Est. Cost (Over) Under Budget	Cost Expended to Budget	Cost Expended to Total Cost
			(1)	(2)	(1+2)=(3)	(4)	(5)	(4+5)=(6)	(7)		(6+7)=(9)	(3-9) = (10)	(6) / (3)	(6)/(9)
<u>New Community Park Land Acquisition</u>														
NE	98-881-a	New Community Park - NE Quadrant (Teufel)	10,000,000	132,657	10,132,657	8,103,899	-	8,103,899	-	Complete	8,103,899	2,028,758	80.0%	100.0%
NE	98-881-b	Community Park Expansion - NE Quad (BSD/William Walker)	-	-	-	372,655	582	373,237	-	Complete	373,237	(373,237)	n/a	100.0%
Sub-total New Community Park			10,000,000	132,657	10,132,657	8,476,554	582	8,477,136	-		8,477,136	1,655,521	83.7%	100.0%
UND		Authorized Use of Savings for New Neighborhood Parks Land Acquisition Category	-	(1,655,521)	(1,655,521)	-	-	-	-	N/A	-	(1,655,521)	n/a	n/a
Total New Community Park			10,000,000	(1,522,864)	8,477,136	8,476,554	582	8,477,136	-		8,477,136	-	100.0%	100.0%
<u>Renovate and Redevelop Community Parks</u>														
NE	92-916	Cedar Hills Park & Athletic Field	6,194,905	166,269	6,361,174	173,955	37,075	211,030	7,843,146	A&E	8,054,176	(1,693,002)	3.3%	2.6%
SE	92-917	Schiffler Park	3,598,700	72,672	3,671,372	2,647,176	-	2,647,176	-	Complete	2,647,176	1,024,196	72.1%	100.0%
Total Renovate and Redevelop Community Parks			9,793,605	238,941	10,032,546	2,821,131	37,075	2,858,206	7,843,146		10,701,352	(668,806)	28.5%	26.7%
<u>Natural Area Preservation - Restoration</u>														
NE	97-963	Roger Tilbury Memorial Park	30,846	828	31,674	1,310	44	1,354	30,320	Planning	31,674	-	4.3%	4.3%
NE	97-964	Cedar Mill Park	30,846	835	31,681	193	8	201	29,955	Planning	30,156	1,525	0.6%	0.7%
NE	97-965	Jordan/Jackie Husen Park	308,460	8,275	316,735	24,317	1,789	26,106	31,294	Planting	57,400	259,335	8.2%	45.5%
NW	97-966	NE/Bethany Meadows Trail Habitat Connection	246,768	6,693	253,461	-	-	-	253,461	On Hold	253,461	-	0.0%	0.0%
NW	97-967	Hansen Ridge Park (formerly Kaiser Ridge)	10,282	243	10,525	8,186	-	8,186	4,814	Preparation	13,000	(2,475)	77.8%	63.0%
NW	97-968	Allenbach Acres Park	41,128	1,094	42,222	3,514	1,000	4,514	37,076	Planning	41,590	632	10.7%	10.9%
NW	97-969	Crystal Creek Park	205,640	5,530	211,170	5,374	16	5,390	107,158	Preparation	112,548	98,622	2.6%	4.8%
NE	97-970	Foothills Park	61,692	1,143	62,835	46,178	-	46,178	-	Complete	46,178	16,657	73.5%	100.0%
NE	97-971	Commonwealth Lake Park	41,128	759	41,887	30,809	-	30,809	-	Complete	30,809	11,078	73.6%	100.0%
NW	97-972	Tualatin Hills Nature Park	90,800	2,278	93,078	27,696	-	27,696	-	Complete	27,696	65,382	29.8%	100.0%
NE	97-973	Pioneer Park	10,282	233	10,515	7,490	5	7,495	2,952	Preparation	10,447	68	71.3%	71.7%
NW	97-974	Whispering Woods Park	51,410	897	52,307	48,871	-	48,871	-	Complete	48,871	3,436	93.4%	100.0%
NW	97-975	Willow Creek Nature Park	20,564	383	20,947	21,877	-	21,877	-	Complete	21,877	(930)	104.4%	100.0%
SE	97-976	AM Kennedy Park	30,846	667	31,513	24,695	703	25,398	7,302	Planting	32,700	(1,187)	80.6%	77.7%
SE	97-977	Camille Park	77,115	1,648	78,763	59,248	1,751	60,999	11,354	Planting	72,353	6,410	77.4%	84.3%
SE	97-978	Vista Brook Park	20,564	548	21,112	3,044	-	3,044	17,456	Planting	20,500	612	14.4%	14.8%
SE	97-979	Greenway Park/Koll Center	61,692	1,576	63,268	30,704	5,030	35,734	27,266	Preparation	63,000	268	56.5%	56.7%
SE	97-980	Bauman Park	82,256	1,984	84,240	30,134	19	30,153	53,179	Complete	83,332	908	35.8%	36.2%
SE	97-981	Fanno Creek Park	162,456	4,368	166,824	5,022	114	5,136	160,794	Preparation	165,930	894	3.1%	3.1%
SE	97-982	Hideaway Park	41,128	976	42,104	30,949	2,271	33,220	8,737	Planting	41,957	147	78.9%	79.2%
SW	97-983	Murrayhill Park	61,692	1,014	62,706	65,706	6	65,712	-	Complete	65,712	(3,006)	104.8%	100.0%
SE	97-984	Hyland Forest Park	71,974	1,316	73,290	58,821	3,300	62,121	-	Complete	62,121	11,169	84.8%	100.0%
SW	97-985	Cooper Mountain	205,640	5,577	211,217	14	-	14	211,203	On Hold	211,217	-	0.0%	0.0%
SW	97-986	Winkelman Park	10,282	237	10,519	5,894	-	5,894	-	Complete	5,894	4,625	56.0%	100.0%
SW	97-987	Lowami Hart Woods	287,896	7,680	295,576	36,144	27,590	63,734	101,266	Preparation	165,000	130,576	21.6%	38.6%
SW	97-988	Rosa/Hazeldale Parks	28,790	708	29,498	11,563	1,191	12,754	-	Complete	12,754	16,744	43.2%	100.0%
SW	97-989	Mt Williams Park	102,820	2,787	105,607	244	-	244	105,363	Planning	105,607	-	0.2%	0.2%
SW	97-990	Jenkins Estate	154,230	3,309	157,539	128,915	3,786	132,701	-	Complete	132,701	24,838	84.2%	100.0%
SW	97-991	Summercrest Park	10,282	188	10,470	7,987	-	7,987	-	Complete	7,987	2,483	76.3%	100.0%
SW	97-992	Morrison Woods	61,692	1,672	63,364	0	-	0	63,364	On Hold	63,364	-	0.0%	0.0%
UND	97-993	Interpretive Sign Network	339,306	8,697	348,003	159,784	108,515	268,299	71,001	Sign Fabrication	339,300	8,703	77.1%	79.1%
NW	97-994	Beaverton Creek Trail	61,692	1,673	63,365	-	-	-	63,365	On Hold	63,365	-	0.0%	0.0%
NW	97-995	Bethany Wetlands/Bronson Creek	41,128	1,116	42,244	-	-	-	42,244	On Hold	42,244	-	0.0%	0.0%
NW	97-996	Bluegrass Downs Park	15,423	418	15,841	-	-	-	15,841	On Hold	15,841	-	0.0%	0.0%
NW	97-997	Crystal Creek	41,128	1,116	42,244	-	-	-	42,244	On Hold	42,244	-	0.0%	0.0%
UND	97-914	Restoration of new properties to be acquired	643,023	17,440	660,463	598	-	598	659,865	On Hold	660,463	-	0.1%	0.1%
Total Natural Area Restoration			3,762,901	95,906	3,858,807	885,281	157,138	1,042,419	2,158,874		3,201,293	657,514	27.0%	32.6%
<u>Natural Area Preservation - Land Acquisition</u>														
UND	98-882	Natural Area Acquisitions	8,400,000	202,355	8,602,355	3,962,232	472,712	4,434,944	4,167,411	Budget	8,602,355	-	51.6%	51.6%
Total Natural Area Preservation - Land Acquisition			8,400,000	202,355	8,602,355	3,962,232	472,712	4,434,944	4,167,411		8,602,355	-	51.6%	51.6%

Tualatin Hills Park and Recreation District
Monthly Bond Capital Projects Report
Estimated Cost vs. Budget
Through 2/28/2015

Quad- rant	Project Code	Description	Project Budget			Project Expenditures			Estimated Cost to Complete	Basis of Estimate (Completed Phase)	Project Cumulative Cost	Variance		
			Initial Project Budget	Adjustments	Current Total Project Budget FY 14/15	Expended Prior Years	Expended Year-to-Date	Total Expended to Date				Est. Cost (Over) Under Budget	Cost Expended to Budget	Cost Expended to Total Cost
			(1)	(2)	(1+2)=(3)	(4)	(5)	(4+5)=(6)	(7)		(6+7)=(9)	(3-9) = (10)	(6) / (3)	(6)/(9)
<u>New Linear Park and Trail Development</u>														
SW	93-918	Westside Trail Segments 1, 4, & 7	4,267,030	83,702	4,350,732	4,395,221	-	4,395,221	-	Complete	4,395,221	(44,489)	101.0%	100.0%
NE	93-920	Jordan/Husen Park Trail	1,645,120	45,644	1,690,764	1,227,496	-	1,227,496	-	Complete	1,227,496	463,268	72.6%	100.0%
NW	93-924	Waterhouse Trail Segments 1, 5 & West Spur	3,804,340	77,258	3,881,598	4,311,409	31,221	4,342,630	176,365	Bid Award	4,518,995	(637,397)	111.9%	96.1%
NW	93-922	Rock Creek Trail #5 & Allenbach, North Bethany #2	2,262,040	76,231	2,338,271	1,729,048	752	1,729,800	794,696	On Hold	2,524,496	(186,225)	74.0%	68.5%
UND	93-923	Miscellaneous Natural Trails	100,000	2,480	102,480	29,454	122	29,576	72,904	Budget	102,480	-	28.9%	28.9%
NW	91-912	Nature Park - Old Wagon Trail	359,870	3,094	362,964	238,702	-	238,702	-	Complete	238,702	124,262	65.8%	100.0%
NE	91-913	NE Quadrant Trail - Bluffs Phase 2	257,050	14,714	271,764	414,817	-	414,817	-	Complete	414,817	(143,053)	152.6%	100.0%
SW	93-921	Lowami Hart Woods	822,560	55,532	878,092	1,271,006	-	1,271,006	-	Complete	1,271,006	(392,914)	144.7%	100.0%
NW	91-911	Westside - Waterhouse Trail Connection	1,542,300	40,346	1,582,646	197,910	132,086	329,996	695,536	Design Dev	1,025,532	557,114	20.9%	32.2%
Total New Linear Park and Trail Development			15,060,310	399,001	15,459,311	13,815,063	164,181	13,979,244	1,739,501		15,718,745	(259,434)	90.4%	88.9%
<u>New Linear Park and Trail Land Acquisition</u>														
UND	98-883	New Linear Park and Trail Acquisitions	1,200,000	22,858	1,222,858	1,193,314	22,601	1,215,915	6,943	Budget	1,222,858	-	99.4%	99.4%
Total New Linear Park and Trail Land Acquisition			1,200,000	22,858	1,222,858	1,193,314	22,601	1,215,915	6,943		1,222,858	-	99.4%	99.4%
<u>Multi-field/Multi-purpose Athletic Field Development</u>														
SW	94-925	Winkelman Athletic Field	514,100	34,434	548,534	941,843	-	941,843	-	Complete	941,843	(393,309)	171.7%	100.0%
SE	94-926	Meadow Waye Park	514,100	4,791	518,891	407,340	-	407,340	-	Complete	407,340	111,551	78.5%	100.0%
NW	94-927	New Fields in NW Quadrant	514,100	13,943	528,043	75	-	75	527,968	Budget	528,043	-	0.0%	0.0%
NE	94-928	New Fields in NE Quadrant (Cedar Mill Park)	514,100	13,893	527,993	5,192	522,801	527,993	-	Bid Award	527,993	-	100.0%	100.0%
SW	94-929	New Fields in SW Quadrant	514,100	13,933	528,033	669	-	669	527,364	Budget	528,033	-	0.1%	0.1%
SE	94-930	New Fields in SE Quadrant	514,100	13,944	528,044	123	2,859	2,982	525,062	Budget	528,044	-	0.6%	0.6%
Total Multi-field/Multi-purpose Athletic Field Dev.			3,084,600	94,938	3,179,538	1,355,242	525,660	1,880,902	1,580,394		3,461,296	(281,758)	59.2%	54.3%
<u>Deferred Park Maintenance Replacements</u>														
UND	96-960	Play Structure Replacements at 11 sites	810,223	3,685	813,908	772,530	350	772,880	-	Complete	772,880	41,028	95.0%	100.0%
NW	96-720	Bridge/boardwalk replacement - Willow Creek	96,661	1,276	97,937	127,277	-	127,277	-	Complete	127,277	(29,340)	130.0%	100.0%
SW	96-721	Bridge/boardwalk replacement - Rosa Park	38,909	369	39,278	38,381	-	38,381	-	Complete	38,381	897	97.7%	100.0%
SW	96-722	Bridge/boardwalk replacement - Jenkins Estate	7,586	34	7,620	28,430	-	28,430	-	Complete	28,430	(20,810)	373.1%	100.0%
SE	96-723	Bridge/boardwalk replacement - Hartwood Highlands	10,767	134	10,901	985	-	985	-	Cancelled	985	9,916	9.0%	100.0%
NE	96-998	Irrigation Replacement at Roxbury Park	48,854	63	48,917	41,902	-	41,902	-	Complete	41,902	7,015	85.7%	100.0%
UND	96-999	Pedestrian Path Replacement at 3 sites	116,687	150	116,837	118,039	-	118,039	-	Complete	118,039	(1,202)	101.0%	100.0%
SW	96-946	Permeable Parking Lot at Aloha Swim Center	160,914	1,515	162,429	191,970	-	191,970	-	Complete	191,970	(29,541)	118.2%	100.0%
NE	96-947	Permeable Parking Lot at Sunset Swim Center	160,914	3,401	164,315	512,755	-	512,755	-	Complete	512,755	(348,440)	312.1%	100.0%
Sub-total Deferred Park Maintenance Replacements			1,451,515	10,627	1,462,142	1,832,269	350	1,832,619	-		1,832,619	(370,477)	1321.7%	900.0%
UND		Authorized Use of Savings from Facility Expansion & Improvements Category	-	177,920	177,920	-	-	-	-	N/A	-	177,920	n/a	n/a
UND		Authorized Use of Savings from Bond Issuance Administration Category	-	192,557	192,557	-	-	-	-	N/A	-	192,557	n/a	n/a
Total Deferred Park Maintenance Replacements			1,451,515	381,104	1,832,619	1,832,269	350	1,832,619	-		1,832,619	-	100.0%	100.0%
<u>Facility Rehabilitation</u>														
UND	95-931	Structural Upgrades at Several Facilities	317,950	(195,027)	122,923	109,345	1,559	110,904	-	Complete	110,904	12,019	90.2%	100.0%
SW	95-932	Structural Upgrades at Aloha Swim Center	406,279	8,432	414,711	518,302	-	518,302	-	Complete	518,302	(103,591)	125.0%	100.0%
SE	95-933	Structural Upgrades at Beaverton Swim Center	1,447,363	35,101	1,482,464	775,636	21,457	797,093	83,556	Master Planning	880,649	601,815	53.8%	90.5%
NE	95-934	Structural Upgrades at Cedar Hills Recreation Center	628,087	16,739	644,826	46,749	56,282	103,031	378,615	Design Dev	481,646	163,180	16.0%	21.4%
SW	95-935	Structural Upgrades at Conestoga Rec/Aquatic Ctr	44,810	833	45,643	66,762	-	66,762	-	Complete	66,762	(21,119)	146.3%	100.0%
SE	95-937	Structural Upgrades at Garden Home Recreation Center	486,935	13,206	500,141	11,234	2,387	13,621	627,227	Master Planning	640,848	(140,707)	2.7%	2.1%
SE	95-938	Structural Upgrades at Harman Swim Center	179,987	2,779	182,766	73,115	-	73,115	-	Complete	73,115	109,651	40.0%	100.0%
NW	95-939-a	Structural Upgrades at HMT/50 Mtr Pool/Aquatic Ctr	312,176	4,692	316,868	233,369	-	233,369	-	Complete	233,369	83,499	73.6%	100.0%
NW	95-939-b	Structural Upgrades at HMT Aquatic Ctr - Roof Replacement	-	200,000	200,000	-	-	-	200,000	Master Planning	200,000	-	0.0%	0.0%
NW	95-940	Structural Upgrades at HMT Administration Building	397,315	6,080	403,395	299,599	-	299,599	-	Complete	299,599	103,796	74.3%	100.0%
NW	95-941	Structural Upgrades at HMT Athletic Center	65,721	85	65,806	66,000	-	66,000	-	Complete	66,000	(194)	100.3%	100.0%
NW	95-942	Structural Upgrades at HMT Dryland Training Ctr	116,506	2,101	118,607	75,686	-	75,686	-	Complete	75,686	42,921	63.8%	100.0%

Tualatin Hills Park and Recreation District
Monthly Bond Capital Projects Report
Estimated Cost vs. Budget
Through 2/28/2015

Quad- rant	Project Code	Description	Project Budget			Project Expenditures			Estimated Cost to Complete	Basis of Estimate (Completed Phase)	Project Cumulative Cost	Variance		
			Initial Project Budget	Adjustments	Current Total Project Budget FY 14/15	Expended Prior Years	Expended Year-to-Date	Total Expended to Date				Est. Cost (Over) Under Budget	Cost Expended to Budget	Cost Expended to Total Cost
			(1)	(2)	(1+2)=(3)	(4)	(5)	(4+5)=(6)	(7)		(6+7)=(9)	(3-9) = (10)	(6) / (3)	(6)/(9)
NW	95-943	Structural Upgrades at HMT Tennis Center	268,860	4,949	273,809	74,804	-	74,804	-	Complete	74,804	199,005	27.3%	100.0%
SE	95-944	Structural Upgrades at Raleigh Swim Center	4,481	6	4,487	5,703	-	5,703	-	Complete	5,703	(1,216)	127.1%	100.0%
NW	95-945	Structural Upgrades at Somerset Swim Center	8,962	12	8,974	9,333	-	9,333	-	Complete	9,333	(359)	104.0%	100.0%
NE	95-950	Sunset Swim Center Structural Upgrades	1,028,200	16,245	1,044,445	626,419	-	626,419	-	Complete	626,419	418,026	60.0%	100.0%
NE	95-951	Sunset Swim Center Pool Tank	514,100	275	514,375	308,574	-	308,574	-	Complete	308,574	205,801	60.0%	100.0%
UND	95-962	Auto Gas Meter Shut Off Valves at All Facilities	-	-	-	-	540	540	13,918	Design Dev	14,458	(14,458)	0.0%	3.7%
		Total Facility Rehabilitation	6,227,732	116,508	6,344,240	3,300,630	82,225	3,382,855	1,303,316		4,686,171	1,658,069	53.3%	72.2%
		Facility Expansion and Improvements												
SE	95-952	Elsie Stuhr Center Expansion & Structural Improvements	1,997,868	30,311	2,028,179	2,039,367	-	2,039,367	-	Complete	2,039,367	(11,188)	100.6%	100.0%
SW	95-953	Conestoga Rec/Aquatic Expansion & Splash Pad	5,449,460	83,658	5,533,118	5,435,930	-	5,435,930	-	Complete	5,435,930	97,188	98.2%	100.0%
SW	95-954	Aloha ADA Dressing Rooms	123,384	158	123,542	178,764	-	178,764	-	Complete	178,764	(55,222)	144.7%	100.0%
NW	95-955	Aquatics Center ADA Dressing Rooms	133,666	1,083	134,749	180,540	-	180,540	-	Complete	180,540	(45,791)	134.0%	100.0%
NE	95-956	Athletic Center HVAC Upgrades	514,100	654	514,754	321,821	-	321,821	-	Complete	321,821	192,933	62.5%	100.0%
		Sub-total Facility Expansion and Improvements	8,218,478	115,864	8,334,342	8,156,422	-	8,156,422	-		8,156,422	177,920	97.9%	100.0%
UND		Authorized Use of Savings for Deferred Park Maintenance Replacements Category	-	(177,920)	(177,920)	-	-	-	-	N/A	-	(177,920)	n/a	n/a
		Total Facility Expansion and Improvements	8,218,478	(62,056)	8,156,422	8,156,422	-	8,156,422	-		8,156,422	-	100.0%	100.0%
		ADA/Access Improvements												
NW	95-957	HMT ADA Parking & other site improvement	735,163	19,029	754,192	165,254	734,571	899,825	115,496	Bid Award	1,015,321	(261,129)	119.3%	88.6%
UND	95-958	ADA Improvements - undesignated funds	116,184	2,663	118,847	72,245	-	72,245	-	Complete	72,245	46,602	60.8%	100.0%
SW	95-730	ADA Improvements - Barrows Park	8,227	104	8,331	6,825	-	6,825	-	Complete	6,825	1,506	81.9%	100.0%
NW	95-731	ADA Improvements - Bethany Lake Park	20,564	194	20,758	25,566	-	25,566	-	Complete	25,566	(4,808)	123.2%	100.0%
NE	95-732	ADA Improvements - Cedar Hills Recreation Center	8,226	130	8,356	8,255	-	8,255	-	Complete	8,255	101	98.8%	100.0%
NE	95-733	ADA Improvements - Forest Hills Park	12,338	197	12,535	23,416	-	23,416	-	Complete	23,416	(10,881)	186.8%	100.0%
SE	95-734	ADA Improvements - Greenway Park	15,423	196	15,619	-	-	-	-	Cancelled	-	15,619	0.0%	0.0%
SW	95-735	ADA Improvements - Jenkins Estate	16,450	262	16,712	11,550	-	11,550	-	Complete	11,550	5,162	69.1%	100.0%
SW	95-736	ADA Improvements - Lawndale Park	30,846	40	30,886	16,626	-	16,626	-	Complete	16,626	14,260	53.8%	100.0%
NE	95-737	ADA Improvements - Lost Park	15,423	245	15,668	15,000	-	15,000	-	Complete	15,000	668	95.7%	100.0%
NW	95-738	ADA Improvements - Rock Crk Pwrlne Prk (Soccer Fld)	20,564	327	20,891	17,799	-	17,799	-	Complete	17,799	3,092	85.2%	100.0%
NW	95-739	ADA Improvements - Skyview Park	5,140	82	5,222	7,075	-	7,075	-	Complete	7,075	(1,853)	135.5%	100.0%
NW	95-740	ADA Improvements - Waterhouse Powerline Park	8,226	176	8,402	8,402	-	8,402	-	Complete	8,402	-	100.0%	100.0%
NE	95-741	ADA Improvements - West Sylvan Park	5,140	82	5,222	5,102	-	5,102	-	Complete	5,102	120	97.7%	100.0%
SE	95-742	ADA Improvements - Wonderland Park	10,282	163	10,445	4,915	-	4,915	-	Complete	4,915	5,530	47.1%	100.0%
		Total ADA/Access Improvements	1,028,196	23,890	1,052,086	388,030	734,571	1,122,601	115,496		1,238,097	(186,010)	106.7%	90.7%
UND		Authorized Use of Savings from Bond Issuance Administration Category	-	186,010	186,010	-	-	-	-	N/A	-	186,010	n/a	n/a
		Total ADA/Access Improvements	1,028,196	209,900	1,238,096	388,030	734,571	1,122,601	115,496		1,238,097	-	90.7%	90.7%
		Community Center Land Acquisition												
UND	98-884-a	Community Center / Community Park (SW Quadrant) (Hulse/BSD/Engel)	5,000,000	103,517	5,103,517	853,224	531,162	1,384,386	475,000	Award	1,859,386	3,244,131	27.1%	74.5%
UND	98-884-b	Community Center / Community Park (SW Quadrant) (Wenzel/Wall)	-	-	-	2,322,745	29,032	2,351,776	-	Complete	2,351,776	(2,351,776)	n/a	100.0%
		Sub-total Community Center Land Acquisition	5,000,000	103,517	5,103,517	3,175,969	560,194	3,736,162	475,000		4,211,162	892,355	73.2%	88.7%
UND		Outside Funding from Washington County Transferred to New Community Park Development	-	(176,000)	(176,000)	-	-	-	-	N/A	-	(176,000)	n/a	n/a
UND		Outside Funding from Metro Transferred to New Community Park Development	-	(208,251)	(208,251)	-	-	-	-	N/A	-	(208,251)	n/a	n/a
UND		Authorized Use of Savings for New Neighborhood Parks Land Acquisition Category	-	(508,104)	(508,104)	-	-	-	-	N/A	-	(508,104)	n/a	n/a
		Total Community Center Land Acquisition	5,000,000	(788,838)	4,211,162	3,175,969	560,194	3,736,162	475,000		4,211,162	-	88.7%	88.7%
		Bond Administration Costs												

Tualatin Hills Park and Recreation District
Monthly Bond Capital Projects Report
Estimated Cost vs. Budget
Through 2/28/2015

Quad-rant	Project Code	Description	Project Budget			Project Expenditures			Estimated Cost to Complete	Basis of Estimate (Completed Phase)	Project Cumulative Cost	Variance	
			Initial Project Budget	Adjustments	Current Total Project Budget FY 14/15	Expended Prior Years	Expended Year-to-Date	Total Expended to Date				Est. Cost (Over) Under Budget	Cost Expended to Budget
			(1)	(2)	(1+2)=(3)	(4)	(5)	(4+5)=(6)	(7)	(6+7)=(9)	(3-9) = (10)	(6) / (3)	(6)/(9)
ADM		Debt Issuance Costs	1,393,000	(539,654)	853,346	24,772	-	24,772	-	24,772	828,574	2.9%	100.0%
ADM		Bond Accountant Personnel Costs	-	241,090	241,090	197,330	55,718	253,048	67,844	320,892	(79,802)	105.0%	78.9%
ADM		Deputy Director of Planning Personnel Costs	-	57,454	57,454	57,454	-	57,454	-	57,454	-	n/a	100.0%
ADM		Communications Support	-	50,000	50,000	12,675	-	12,675	37,325	50,000	-	25.4%	25.4%
ADM		Technology Needs	18,330	-	18,330	23,952	-	23,952	-	23,952	(5,622)	130.7%	100.0%
ADM		Office Furniture	7,150	-	7,150	5,378	-	5,378	-	5,378	1,772	75.2%	100.0%
ADM		Admin/Consultant Costs	31,520	-	31,520	48,093	-	48,093	-	48,093	(16,573)	152.6%	100.0%
		Sub-total Bond Administration Costs	1,450,000	(191,110)	1,258,890	369,654	55,718	425,372	105,169	530,541	728,349	33.8%	80.2%
UND		Authorized Use of Savings for Deferred Park Maintenance Replacements Category	-	(192,557)	(192,557)	-	-	-	-	-	(192,557)	n/a	n/a
UND		Authorized Use of Savings for New Neighborhood Parks Development Category	-	(258,206)	(258,206)	-	-	-	-	-	(258,206)	n/a	n/a
UND		Authorized Use of Savings for ADA/Access Improvements Category	-	(186,010)	(186,010)	-	-	-	-	-	(186,010)	n/a	n/a
		Total Bond Administration Costs	1,450,000	(827,883)	622,117	369,654	55,718	425,372	105,169	530,541	91,576	68.4%	80.2%
		Grand Total	100,000,000	1,982,564	101,982,564	67,527,561	4,893,644	72,421,205	33,213,195	105,634,400	(3,592,636)	71.0%	68.6%

THPRD Bond Capital Program
Funds Reprogramming Analysis - Based on Category Transfer Eligibility
As of 2/28/2015

	Category (Over) Under Budget
Limited Reprogramming	
Land: New Neighborhood Park	-
New Community Park	-
New Linear Park	-
New Community Center	-
	-
	-
Nat Res: Restoration	657,514
Acquisition	-
	657,514
	657,514
All Other	
New Neighborhood Park Dev	-
Neighborhood Park Renov	(1,439,312)
New Community Park Dev	(3,350,485)
Community Park Renov	(668,806)
New Linear Parks and Trails	(259,434)
Athletic Field Development	(281,758)
Deferred Park Maint Replace	-
Facility Rehabilitation	1,658,069
ADA	-
Facility Expansion	-
Bond Admin Costs	91,576
	(4,250,150)
	(4,250,150)
Grand Total	(3,592,636)



MEMORANDUM

Date: January 30 2015
 To: Board of Directors
 From: Keith Hobson, Director of Business and Facilities
 Re: **System Development Charge Report for January, 2015**

The Board of Directors approved a resolution implementing the System Development Charge program on November 17, 1998. Below please find the various categories for SDC's, i.e., Single Family, Multiple Family and Non-residential Development. Also listed are the collection amounts for both the City of Beaverton and Washington County, and the 1.6% handling fee for collections through January 2015.

Type of Dwelling Unit	Current SDC per Type of Dwelling Unit
Single Family	\$6,450.00 with 1.6% discount = \$6,346.80
Multi-Family	\$4,824.00 with 1.6% discount = \$4,746.82
Non-residential	\$167.00 with 1.6% discount = \$164.33

<u>City of Beaverton Collection of SDCs</u>		<u>Receipts</u>	<u>Collection Fee</u>	<u>Total Revenue</u>
2,837	Single Family Units	\$8,264,037.31	\$222,533.05	\$8,486,570.36
15	Single Family Units at \$489.09	\$7,336.35	\$221.45	\$7,557.80
1,582	Multi-family Units	\$3,359,442.57	\$93,831.20	\$3,453,273.77
0	Less Multi-family credits	(\$7,957.55)	(\$229.36)	(\$8,186.91)
241	Non-residential	\$563,929.89	\$16,423.09	\$580,352.98
4,675		\$12,186,788.57	\$332,779.43	\$12,519,568.00

<u>Washington County Collection of SDCs</u>		<u>Receipts</u>	<u>Collection Fee</u>	<u>Total Revenue</u>
7,494	Single Family Units	\$23,588,724.94	\$593,942.13	\$24,182,667.07
-300	Less Credits	(\$623,548.98)	(\$19,285.02)	(\$642,834.00)
2,667	Multi-family Units	\$7,071,102.57	\$176,369.84	\$7,247,472.41
-24	Less Credits	(\$47,323.24)	(\$1,463.61)	(\$48,786.85)
130	Non-residential	\$607,235.28	\$15,206.38	\$622,441.66
9,967		\$30,596,190.57	\$764,769.72	\$31,360,960.29

<u>Recap by Agency</u>	<u>Percent</u>	<u>Receipts</u>	<u>Collection Fee</u>	<u>Total Revenue</u>
4,675	City of Beaverton	\$12,186,788.57	\$332,779.43	\$12,519,568.00
9,967	Washington County	\$30,596,190.57	\$764,769.72	\$31,360,960.29
14,642		\$42,782,979.14	\$1,097,549.15	\$43,880,528.29

<u>Recap by Dwelling</u>	<u>Single Family</u>	<u>Multi-Family</u>	<u>Non-Resident</u>	<u>Total</u>
City of Beaverton	2,852	1,582	241	4,675
Washington County	<u>7,194</u>	<u>2,643</u>	<u>130</u>	<u>9,967</u>
	<u>10,046</u>	<u>4,225</u>	<u>371</u>	<u>14,642</u>

Total Receipts to Date **\$42,782,979.14**

Total Payments to Date

Refunds	(\$2,066,073.93)
Administrative Costs	(\$18.65)
Project Costs -- Development	(\$22,249,373.53)
<u>Project Costs -- Land Acquisition</u>	<u>(\$9,939,808.93)</u>
	<u>\$8,527,704.10</u>

<u>Recap by Month, FY 2014/15</u>	<u>Receipts</u>	<u>Expenditures</u>	<u>Interest</u>	<u>SDC Fund Total</u>
through June 2014	\$39,401,807.67	(\$33,486,508.43)	\$2,080,328.32	\$7,995,627.56
July	\$362,365.38	(\$20,803.83)	\$3,301.39	\$344,862.94
August	\$987,171.47	(\$393,225.74)	\$3,456.91	\$597,402.64
September	\$249,346.55	(\$17,712.96)	\$3,674.53	\$235,308.12
October	\$873,400.03	(\$68,315.30)	\$4,075.89	\$809,160.62
November	\$194,447.92	(\$169,805.23)	\$3,793.85	\$28,436.54
December	\$295,672.24	(\$81,256.31)	\$4,059.49	\$218,475.42
January	\$418,767.88	(\$17,647.24)	\$4,160.44	\$405,281.08
February	\$0.00	\$0.00	\$0.00	\$0.00
March	\$0.00	\$0.00	\$0.00	\$0.00
April	\$0.00	\$0.00	\$0.00	\$0.00
May	\$0.00	\$0.00	\$0.00	\$0.00
June	\$0.00	\$0.00	\$0.00	\$0.00
	<u>\$42,782,979.14</u>	<u>(\$34,255,275.04)</u>	<u>\$2,106,850.82</u>	<u>\$10,634,554.92</u>

<u>Recap by Month, by Unit</u>	<u>Single Family</u>	<u>Multi-Family</u>	<u>Non-Residential</u>	<u>Total Units</u>
through June 2014	9,738	3,809	359	13,906
July	47	24	5	76
August	18	217	2	237
September	27	27	2	56
October	52	146	0	198
November	35	1	1	37
December	53	0	1	54
January	77	0	1	78
February	0	0	0	0
March	0	0	0	0
April	0	0	0	0
May	0	0	0	0
June	0	0	0	0
	<u>10,047</u>	<u>4,224</u>	<u>371</u>	<u>14,642</u>

Projected SDC balance as of June 30, 2014 per the budget was \$6,458,262. Actual balance was \$7,635,896. This fiscal year's projected total receipts per the budget are \$2,982,681.

Future park remains intact

Oregonian, March 4, 2015

Sexton Mountain neighbors convince the city not to rezone or sell the former Cobb property

By Wendy Owen
Beaverton Leader/OregonLive

Sexton Mountain neighbors won their battle to stop the rezoning and building on a portion of a future park, but they're skeptical that they've won the war.

Beaverton Mayor Denny Doyle told neighbors of the former Cobb property that the city would not rezone or buy a 2.5-acre section of the 8.6-acre future park owned by the Tualatin Hills Park and Recreation District.

He confirmed the decision on Feb. 23.

"It's over, finished," Doyle said. The response from neighbors at a South Beaverton Neighborhood Association meeting last week sealed his decision to stop the process.

"There was enough turmoil from the neighbors, and the park district was getting kicked around a bit and the neighborhood association said it was not the right place," Doyle said.

About 600 people signed a petition against the change in use and about 90 attended a South Beaverton Neighborhood Association meeting in which all voted against selling a portion of the park, including the neighborhood association board, said Ted Forgeron, a Sexton Mountain neighbor.

"The neighbors did an incredible job of making their

case," said Holly Thompson, who oversees public involvement and communications, and attended the meeting.

The city had planned to rezone the site, buy the 2.5 acres from THPRD and resell it to Bridge Meadows, an apartment complex, which pairs up seniors with families planning to adopt foster children.

THPRD said it planned to keep the remaining acreage a park and would have used the money from the land sale to purchase or develop additional parks. The deal would also have given the park district access to flat city property adjacent to the hillside park for a future sports field.

Doyle said he didn't know if the city would allow the park district to access the property without the sale.

Neighbors fought the change, saying they had been told when THPRD bought the property in 2010, that it would be a park. Many said they felt deceived when the park district agreed to sell a portion to the city for housing.

"We're happy, but we're very cautious," said neighbor Ted Forgeron. "The biggest disappointment in all of this was the park district. Even though the city was behind the sale. The park district is acting like they're a land speculator."

See **Park, A11**

Stay active this spring with THPRD!

tennis karate yoga fitness
cooking sports crafts soccer
weightlifting swimming training
nature tumbling music basketball
golf kickball kickboxing art
drama gymnastics volleyball
cardio dance

Choose from hundreds of camps, classes and activities

Spring registration begins

March 7
8 am

for in-district residents

Monday, March 9

For out-of-district residents

Celebrate 60 years of THPRD!
Register March 7 and you could win a \$60 THPRD gift card

For class schedules and other info:

www.thprd.org
or 503-645-6433



TUALATIN HILLS
PARK & RECREATION DISTRICT

Park

Continued from A1

On Feb. 23, the park district issued a news release saying it supports the city's decision.

"We have met with and listened to numerous comments from neighbors of the property," said THPRD General Manager Doug Menke. "We care what all of our district residents think, make decisions with them in mind, and are in agreement with the city's decision."

Bridge Meadows Executive Director Derenda Schubert said the decision wouldn't hurt the organization's relationship with Beaverton. They're still planning to locate there.

"We know better than to just pick one site," she said. "Whenever we're considering placing Bridge Meadows in a community, we look at a variety of options."

She said it was too early in the process to discuss the other sites.

The organization has a fairly tight deadline of April 17 to find a site that is zoned properly and to negotiate an option to buy in order to receive a low-income housing tax credit, which is used to offset costs, Schubert said.

Doyle sang praises for Bridge Meadows and said the park issue was not a NIMBY (not in my backyard) complaint. Neighbors said they supported Bridge Meadows. They just didn't want to lose a portion of their park.

"This whole thing was my idea," Doyle said. He suggested the site to Bridge Meadows because of the non-profit's tight timeline and because of the land's proximity to shopping, buses and a school.

"I never thought about what public sentiment might be," he said.

Doyle said he learned another lesson as mayor. "Once again, it's best to go slow in Beaverton."

Doyle lives two blocks from the property, but said he didn't discuss it with the neighbors even when they knocked on his door.

"I definitely know the rules," he said, adding that he told them he couldn't talk with them about it.

Meanwhile, the neighbors are now the watchdogs of the Cobb property.

"That needs to be in writing from THPRD that housing is not going up there," said Janice Alner, whose home is adjacent to the park. "I'm sure all of us could feel more confident in the process if everybody is up front."

THPRD's Menke said they only entertained the proposed sale because, "it would have been to a fellow governmental entity — one that offered us directly adjacent land to use for park purposes."

wowen@oregonian.com

LIFESTYLES

By Wendy Owen
Beaverton Leader/OregonLive

A physical education teacher on a mission was the catalyst behind the birth of the Tualatin Hills Park & Recreation District 60 years ago on March 4.

Elsie Stuhr kicked off the idea in 1953 with a letter to "Fellow Parkless Suburbanites," according to a booklet written by Stuhr that chronicles the first 40 years of the park district.

The letter continues, "Have you thought of the possibilities of community planning for recreational development within the boundaries of the Beaverton Union High School District?"

Apparently, they had. In 1955, voters approved a taxing structure for the park district, making THPRD official.

Two years later, THPRD opened its first facility – the Beaverton Swim Center near Beaverton High School. Swimmers still use it today.

Here are a few interesting facts about THPRD's history from Stuhr's booklet and current information:

- Beaverton had a population of about 3,000 people when THPRD started. It's now about 92,000.

- Before THPRD, swimmers had to go to Forest Grove or Portland. The Beaverton area had only two small parks and one tennis court.

- Today, THPRD has 90 parks, 60 miles of trails, eight swim centers, six recreation centers and 1,400 acres of natural areas.

- In 1955, the park district budget was \$65,000. Today, it is about \$44 million.

- Early on, THPRD and the school district developed a tight partnership that continues today. The park district uses school fields in return for maintaining them.

- The Beaverton Swim Center was built in an L-shape to separate divers from swimmers and the deck of the pool was heated with copper coils. The glass doors along one side shattered during the 1962

Columbus Day storm, strewn glass into the pool, which was filled with children. No one was hurt.

- The first park came in 1959. Cedar Hills Park, complete with tennis courts, baseball diamond, soccer field, barbecue pit, restrooms and a shelter

- By 1970, there were 22 park and rec sites, three pools, a lighted baseball field, a sports field and 20 tennis courts. (THPRD built tennis courts at each intermediate school in the 1960s)

- In 1974, the park district got a boost when voters passed a \$10 million bond, which paid for an Olympic-sized pool, indoor and outdoor tennis courts, baseball diamonds, soccer fields and more at a recreational site later named Howard M. Terpenning Recreation Complex.

- The complex opened in 1979 with Gov. Vic Atiyeh as ceremony speaker. Terpenning was THPRD's general manager from 1959-1992. He died last February at age 83.

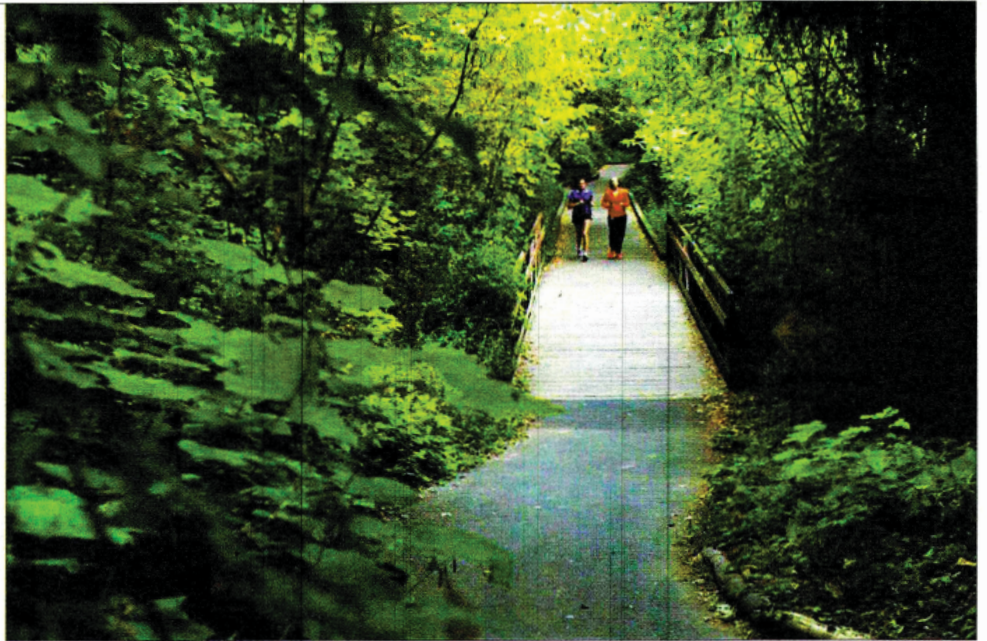
- In 1976, a Bonny Slope community group offered to sell the park district 3.5 acres for \$4,000 with the stipulation that the park would only be used by "members of the white race." Stuhr wrote, "The Park District, of course, could have no requirements like that."

- A.M. Kennedy Park near Beaverton-Hillsdale Highway was named after the first mail carrier in the area, who delivered by horse-drawn buckboard and later by car.

- The district has also acquired three historic sites, saving them from destruction – the Jenkins Estate, the Fanno Farmhouse and the John Quincy Adams Young House.

- In 2008, voters approved a \$100 million bond measure and the park district has purchased land, developed and renovated parks, added trails and restored natural areas.

- This year, THPRD finished work on Cedar Mill Park, Lowami Hart Woods Natural Area, Hazeldale Park and the Waterhouse Trail, among others.



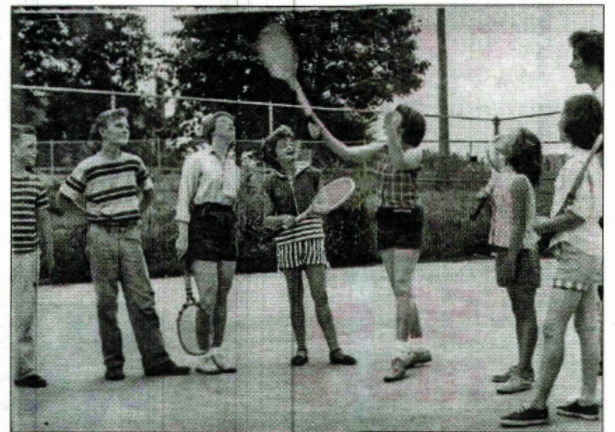
STAFF/2011

Tualatin Hills Park & Recreation District has built 60 miles of trails through the district. This trail is part of the 222-acre Tualatin Hills Nature Park. THPRD celebrates its 60th anniversary on March 4.

THPRD celebrates 60 years



Elsie Stuhr was 50 when she kicked off the idea of a parks district in 1953. She died in 2003 at age 100.



Tennis grew in popularity in the 1960s and 70s.

B For more information on THPRD's history and a gallery of photos, go to oregonlive.com/beaverton

Two candidates file for THPRD board openings for election

By Wendy Owen

Beaverton Leader/OregonLive

So far, two candidates have expressed an interest in serving a four-year term on the Tualatin Hills Park & Recreation District board.

Incumbent John Griffiths seeks to continue his long run at position 4, and Ali Kavianian is seeking the position 5 seat, currently held by Joe Blowers.

As of Wednesday afternoon, Feb. 25, Blowers had not filed for re-election.

The election is scheduled for May 19.

Kavianian has lived in Beaverton for 23 years and currently works as a private wealth manager for Creative Planning, Inc.

For the last eight years, he has involved himself in the

Beaverton community. Kavianian is chairman of the Beaverton Committee for Community Involvement, vice chairman of the Beaverton Visioning Committee and serves on the Beaverton Chamber of Commerce Board as well as the Beaverton Comprehensive Plan Advisory Committee.

He has a bachelor's degree in business from Portland State University.

Griffiths has served on the THPRD board since 1999 and has volunteered on a variety of other boards as well, including THPRD's Nature Park Advisory Committee and its Land Acquisition Committee. He also served on Metro's Natural Areas Bond Measure and Maintenance and Restoration

committees, Beaverton Budget Committee and the THPRD Foundation Board.

He has spent more than 30 years with Intel, including his current position as business development director.

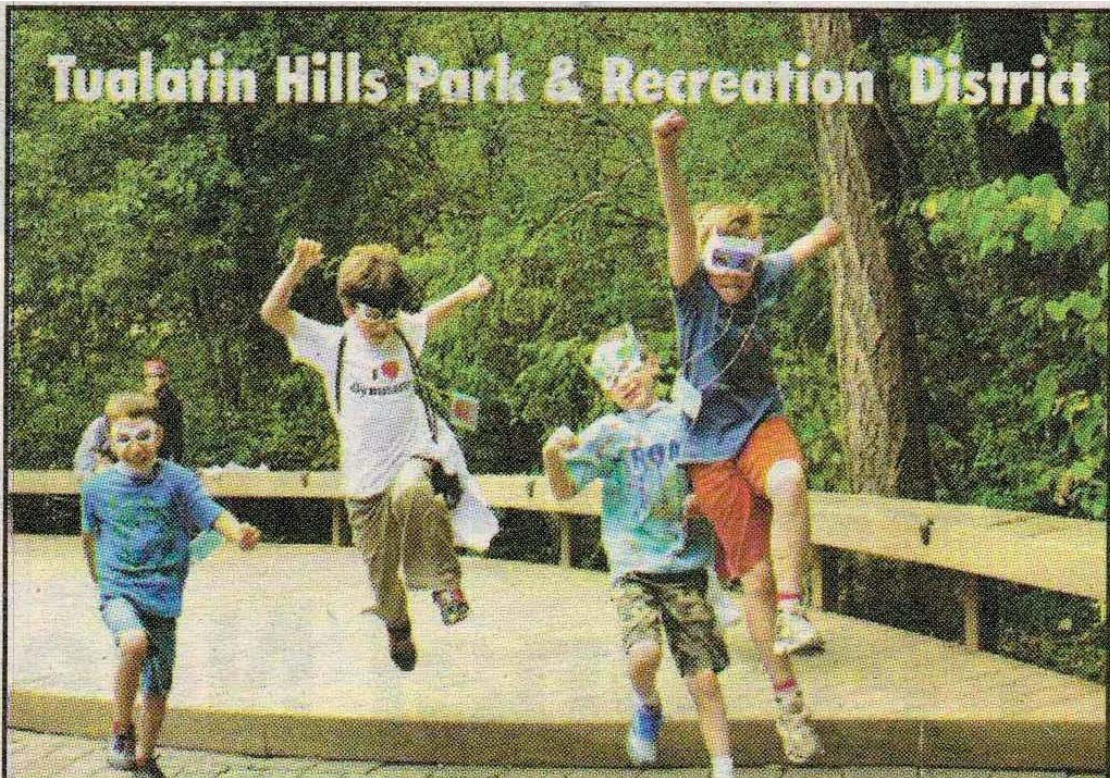
Before his years with Intel, he worked ground support and passenger service for Scandinavian Airlines, Hughes AirWest and Republic Airlines.

Griffiths has a bachelor's in history from University of California, Santa Barbara, an MBA from University of California, Los Angeles and he is a certified management accountant.

The deadline for candidates to apply is March 19.

•
wowen@oregonian.com
@bvrtnreporter

Tualatin Hills Park & Recreation District



Summer Camps

For the
Beaverton
Area

In-district registration begins April 18!

From sports to nature, arts & crafts,
cooking and more. Choose from a wide
variety of camps at THPRD!

Details and information:
503-645-6433 | thprd.org



TUALATIN HILLS
PARK & RECREATION DISTRICT

Turn Summer-Camp Interests Into Year-Round Hobbies

BY AMY ROBERTS

Summer is a time for fun and trying new things. With Portland's abundance of camp offerings, local campers may find new creative outlets this summer. Parents should support those budding interests well after camp ends.

"I know it's a struggle for parents to find balance for their students to keep them healthy, well-rounded, engaged and challenged," Lindsay Bjork, a Garden Home Recreation Center supervisor in the Tualatin Hills Park and Recreation District (THPRD), said.

Given the challenges busy families face, how can families keep new interests piqued once camp ends? Bjork encouraged parents to seek programs that are enriching. A product of the THPRD herself, she is proud to be involved there professionally because she believes THPRD is attuned to the needs of the community and committed to providing ongoing programming. For example, Bjork said children who enjoy THPRD's "Iron Chef"-themed summer camp can find other cooking classes through the district at other times.

Selecting summer-camp options from programs such as THPRD, or the broad-based YMCA of Columbia-Willamette, can increase the possibility of programming being attainable later. Additionally, it helps to go with a summer-camp provider who regularly partners with others on specialized programming.

"Because of our partnerships, THPRD staff can often make recommendations for finding classes or events that foster an interest a child developed at camp, even if

the district itself doesn't offer it," Bjork said.

Encourage new interests at home as well. Invest in supplies to use at home or borrow books on hobbies.

Conduct online research to determine whether local civic organizations or clubs offer similar programs.

"My sons were interested in theater and music and

sports. I got them involved early in local theater, church-related events and day camps," Danette Buchanan, a state-licensed counselor with Portland's

Danette Buchanan Pastoral Counseling, LLC, said.

Buchanan encourages parents to attend events and cheer on their children as they pursue new activities.



PHOTO COURTESY OF TUALATIN HILLS PARKS & RECREATION DISTRICT

Keep supplies for any new hobby on hand at home and encourage a child to pursue his interests.

Park district weighs options on beaver dams

By Wendy Owen
Beaverton Leader/OregonLive

Greenway Park used to have a beaver or two living along Fanno Creek, which winds through the area, and the park-goers and animals lived in harmony.

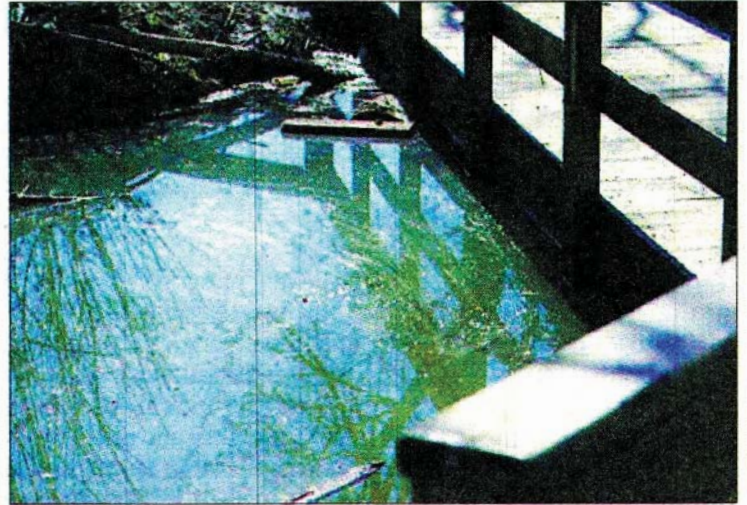
But now a family of beavers calls it home and they're flooding the park. The beavers have dammed Fanno Creek, and Tualatin Hills Park & Recreation District gated off a loop

section of the flooded trail at least six months ago.

Even after several days of dry weather, the trail remains underwater. The main trail takes walkers and bikers around the high water, but lately it's been flooding when it rains too, said James Wilson, a frequent trail user.

"Beavers are cool animals, but you can't let them destroy the thing," he said. "This is not

See **Dams**, A11



WENDY OWEN/STAFF

After several dry days, water hasn't receded from the bottom of a bridge across Fanno Creek. Beavers have dammed the creek, flooding a portion of the Fanno Creek Regional Trail.

Dams

Continued from A1

a lake, it's a park."

THPRD was waiting to see if Fanno Creek would wash away the dams, said Bruce Barbarasch, superintendent of natural resources and trails management. But that hasn't happened, and the park district is considering other options.

Barbarasch said THPRD could let nature run its course and make a portion of the park a wildlife area. Other options could include rerouting the flooded trail or building a boardwalk or bridge over the area.

Building a new trail or

a boardwalk, however, is expensive, and the park district doesn't have funding for it, he said.

Nearly 100 percent of Greenway Park is in a flood plain, Barbarasch said. Asked why THPRD would build trails in a flood plain, he said the park was developed decades ago and "there is only so much usable space."

The park district has heard from people on both sides of the beaver issue, he said. Some people want the beavers to take up residence. Others believe taxpayers should have full use of the park.

"There's no reason they (THPRD) can't find a way to make it work for both," said Mike Barrett, who walks the park daily during his lunch

break.

Wilson worries about the park infrastructure, paid for by taxpayers, getting destroyed. After several dry days, water in Fanno Creek was high enough to hit the bottom of a walking bridge, and Wilson said it covers the bridges on rainy days. He wants the park district to break up the dams and let Fanno Creek flow again.

Beavers are good for creating habitat for other creatures and helping with water quality, Barbarasch said. He said THPRD will consider options this spring, get thoughts from the public and evaluate the best approach.

wowen@oregonian.com

503-294-5961; @bvrtnreporter

Portland man arrested for abusing his dog at Walker Road skate park

By MILES VANCE
The Times

Beaverton Police arrested Daniel Michael Bulzacchelli of Portland on Monday afternoon after Bulzacchelli allegedly grabbed his dog by the neck and threw it 10 to 15 feet at the Tualatin Hills Park & Recreation District skate park at 15707 S.W. Walker Road.

Beaverton Police were called to the skate park at approximately 3 p.m. after a caller reported that a subject had grabbed his dog by the neck and threw it 10 to 15 feet onto the concrete pad of the skate park. A second witness told



BULZACCHELLI

police that the dog was later seen limping around the skate park for 10 to 15 minutes after the incident and appeared scared and would cower whenever the subject came towards him.

Police contacted the dog's owner, identified as Daniel Michael Bulzacchelli II, 22, of Portland. Bulzacchelli told police that he was at the skate park and his dog Blucifer — a 1-year-old Blue Heeler — was walking around the skate park. Bulzacchelli told police that Blucifer walked out onto the concrete skating area; he called the dog back, but when the dog did not come, he went out to get him.

Bulzacchelli told police that he did grab his dog with one hand by the neck and one hand by the rear and lightly tossed him out of the way to keep him from being hit by a bicyclist. Bulzacchelli is currently employed by an unknown Doggie Day-care.

Bulzacchelli was arrested for second-degree animal abuse II and was lodged at the Washington County Jail. Blucifer was taken to the Washington County Animal Shelter and is being held there for his safety. This case is currently under investigation by the Washington County District Attorney's Office.

Beaverton honored for diversity work

National League of Cities calls Beaverton's work 'remarkable' in giving City Cultural Diversity Award

The Times

Beaverton's efforts to include people of all cultures got national recognition Monday for its work to enhance and promote cultural diversity.

The National League of Cities praised Beaverton's "remarkable" program in giving it a first-place City Cultural Diversity Award. Beaverton tied with Cupertino, Calif., among cities with between 25,001 and 100,000 people.

"It truly is a shining example of diversity and total community collaboration and partnership," said Priscilla Tyson, program chair of the 2015 City Cultural Diversity Awards. The award was given March 9 during the Celebrate

Diversity breakfast at the NLC Congressional City Conference in Washington, D.C.

"Beaverton has made huge strides in supporting diversity, equity and inclusion," Mayor Denny Doyle said in a news release. "This award honors the guidance and leadership from Beaverton's communities of color. I am so happy to see their hard work recognized."

According to the city, Beaverton's cultural inclusion program serves as a bridge between city government and historically underrepresented and underserved communities of color to promote

See DIVERSITY / Page 7

Diversity: City wins national award

■ From page A1

racial equity.

In the past year, the city has:

- Established the Diversity Advisory Board to focus on engagement and support of racially and ethnically diverse populations in Beaverton.

- Developed and adopted the city's first Diversity, Equity and Inclusion Plan, a community-led vision of what it will take to build a more inclusive and equitable city.

- Partnered with the Center for Intercultural Organizing to host the Beaverton Organizing and Leadership Development program, which aims to sup-

port emerging immigrant, refugee, and other leaders of color.

- Started developing a Minority, Women, and Emerging Small Business policy for city purchasing.

- Became the first city in Oregon to join the Welcoming Cities and Counties Initiative, a national coalition focused on supporting local immigrant integration.

- Partnered with Tualatin

Hills Park & Recreation District and Beaverton School District to organize an equity seminar training series.

Doyle accepted the award on behalf of the city at the Celebrate Diversity breakfast. Councilors Cate Arnold, Lacey Beaty and Mark Fagin also attended.

For more information on the cultural inclusion program, contact Alexis Ball at 503-526-

2503 or email aball@BeavertonOregon.gov.

THPRD trails are popular — but spendy

Price of pathways has increased sharply due to rising regulations, standards and land costs

By **ERIC APALATEGUI**
The Times

If you had \$2.8 million burning a hole in your pocket, you could buy yourself a 171-acre ranch near Oakridge, your own personal IMAX theater, or a

43.5-carat yellow diamond known as the “Golden Eye.”

If Tualatin Hills Park & Recreation District officials had that \$2.8 million, they would add another mile to their popular Westside Trail. Some members of THPRD’s

board of directors swallowed hard last week when they learned during a presentation that some trail segments were averaging that amount to design and construct.

“It’s a staggering number,” board member Larry Pelatt commented.

Newer figures from THPRD staff put the average closer to \$2.5 million per mile across

See **TRAILS / Page 8**

Trails: More people use expanded system

■ From page A1

eight trail segments completed in the last few years, but filling three half-mile gaps through tricky landscapes along the 10-foot-wide regional Westside Trail hit the higher average number. Plus, the estimates do not include land acquisition.

“There’s a reason why these segments were left until the end,” said Steve Gulgren, the district’s superintendent for planning and development, describing the difficult trail sections finished over the past few summers.

Unlike a multi-millionaire’s jewelry or luxury viewing of the next “Star Wars” movie, the district’s trails are open to all and widely used.

Trails were one of the highest priorities among district patrons polled before passage of a \$100-million bond measure in 2008. The district devoted \$15 million of those tax dollars to trail construction and has now spent more than \$11.5 million of it with major work on the Westside, Waterhouse and Rock Creek trails.

Thanks in large part to those improvements, the number of users on some trail segments has roughly doubled between 2011 and 2014, according to district counts.

Tom Hjort, chairman of the district’s Trails Advisory Committee, can be found hiking and biking some of those trails every chance he gets. For him, the cost is a bargain.



TIMES PHOTO: MILES VANCE

Ian Bake, a freshman at Aloha High School, runs across a bridge on the Westside Trail between Rigert Road and Flagstone Drive.

“I think that, although that sounds like a lot of money ... it’s not unreasonable,” he said.

In the old days, trail builders simply laid down a strip of asphalt and called it good, officials said.

“They weren’t thinking (much) about trails in the ‘80s, ‘70s and ‘60s,” said Gary Keck, who managed the Westside Trail projects and is now the district’s facilities manager.

Trail-building costs have skyrocketed, due to a spike in regulations designed to protect the environment, higher building standards, ballooning land costs and other factors. Also, punching trails down creek corridors, across wetlands and over hills requires bridges, boardwalks, retaining walls and other costly

structures. Street crossings these days are built with illuminated crosswalks and flashing lights, and dealing with utilities such as natural gas lines requires special care.

For example, new trails are built with porous gravel shoulders to catch run-off water and reduce the impact to streams, adding cost to every yard of trail.

“That wasn’t something that was contemplated even four years ago,” said Aisha Willits, the district’s director of planning.

District officials and the trails committee are wrapping up a functional plan that will help guide future priorities for trail construction, but Willits said cost will factor into deci-

Trails plan

For a closer look at future plans for trails and other improvements in the Tualatin Hills Park & Recreation District, attend an open house, 7-9 p.m. Tuesday, April 28, at the Dryland Room (board meeting room) at the Howard M. Terpenning Recreation Complex, 15707 S.W. Walker Road.

sions of which ones actually get built.

“We can look back on the lines on a map and (ask), ‘Does this make sense?’” she said. “There will be a vetting process.”

The district has enough bond money left in its trails budget to fill a gap in the Westside/Waterhouse corridor that will provide a north-south route across most of its territory. That project will be built in 2016.

Another planned segment that would connect the Rock Creek Trail to Portland Community College’s Rock Creek Campus is on hold until officials determine whether there will be enough money in the coffers to finish it.

While bond money has paid for most of the recent trail improvements, federal transportation grants and some state park grants also help build trails in the district. Obtaining those grants requires plenty of planning.

“It’s critical to have a line on the map,” Willits said. “If the line wasn’t on the map, there would be nothing to allow us to get that funding.”

Beaverton Arts Commission displays works around town

The Times

The Beaverton Arts Commission will showcase works of art at several locations this spring, including The Beaverton Building, Providence St. Vincent, Cedar Hills Recreation Center, Progress Ridge New Seasons and the Artisan Salon.

All artwork included is for sale.

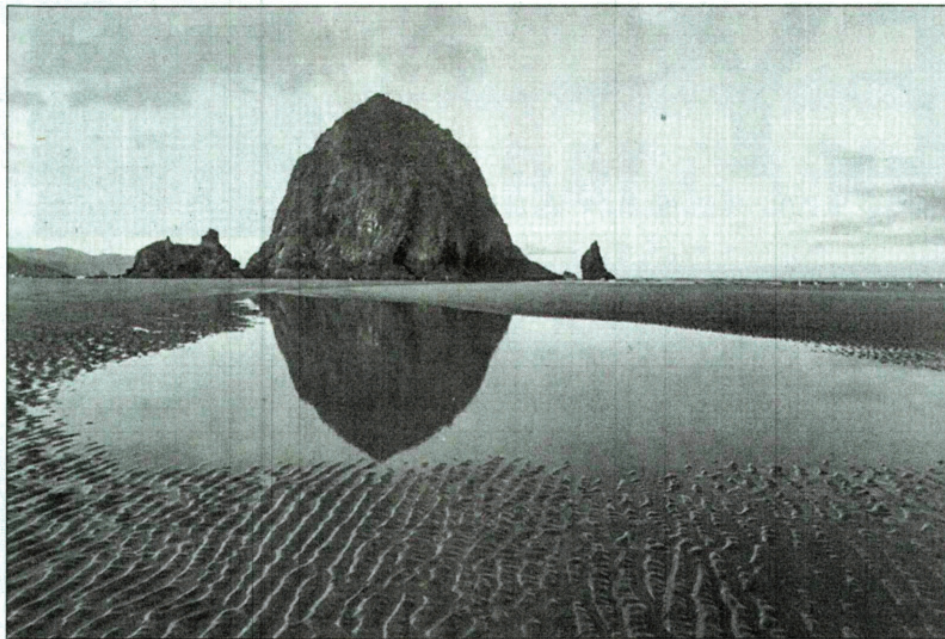
On display now through April 30 at The Beaverton Building are works by the following artists:

First floor: Sunia Gibbs — Gibbs is a painter living in Portland whose tools of choice are a palette knife and a large brush. Her works — created with the intent to convey a mood — feature complex emotions including love, doubt, hope and disappointment. For more information, visit www.suniagibbsart.com/.

Fourth floor: Pamela Long and Rae Lynn Newman — Local photographers Rae Lynn Newman and Pamela Long's work encompasses images from many locations in Oregon including landscapes and floral images.

Fifth floor: Beaverton Area Seniors' Poetry Art — The winners of the Beaverton Resource Guide's fall 2014 art and poetry contest for local seniors are featured.

Sponsored by the Beaverton Library Foundation, all proceeds from the sale of postcards and posters made from this artwork will go to the Beaverton City Library. For more information, contact Michael



Haystack by Pamela Long is among the featured art displayed at The Beaverton Building in March and April.

COURTESY
PAMELA LONG

Sunia Gibbs' Synapsis, below, is one of the works displayed at The Beaverton Building in March and April.

COURTESY
SUNIA GIBBS

at Cedar House Media 503-641-3320 or the Elsie Stuhr Center at 503-629-6342.

Members of the public can view works from 8 a.m. to 5 p.m. Mondays through Fridays. All artwork included in this show is for sale.

On display at Providence St. Vincent (9205 SW Barnes Road) through May 31 are works by the following artists:

Second floor (between the Heart Center and the Café): Sherri Stahl — Stahl is a collage artist and photographer who was diagnosed three years ago with Parkinson's disease.

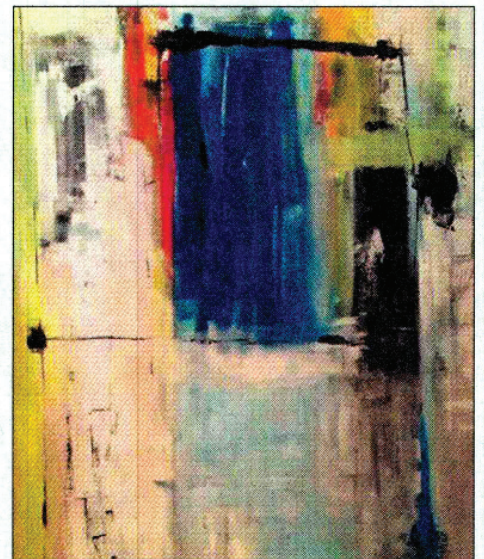
Her collages include her own drawings, watercolors, photographs, and handmade

papers. For more information on the artist, visit www.facebook.com/sherristahlartist.

This quarterly public art highlights the creativity and culture of older adults in Washington County. For information about purchasing one of the featured works at Providence, call 503-526-2299.

The BAC also has revolving art exhibits at Cedar Hills Recreation Center (11640 S.W. Park Way), Progress Ridge New Seasons (14805 S.W. Barrows Road), and the Artisan Salon (4430 S.W. Lombard Avenue).

For more information, contact Elaine Worden at 503-526-2299 or eworden@BeavertonOregon.gov.



Native plant sales herald coming of spring

By Roger Gregory

Beaverton Leader/OregonLive

A sure sign of spring in Washington County is the number of plant sales that take place in March and April. Most of the sales listed below feature native plants:

Audubon Society of Portland will celebrate the growing season with its native plant sale featuring "native plants for native birds." More than 100 species of wildflowers, shrubs and trees will be for sale, with special shopping lists available for shade, sun, butterflies and hummingbirds. The sale is set for 10 a.m. to 4 p.m. April 10-11 at the Audubon Society of Portland, 5151 N.W. Cornell Road, Portland.

Jackson Bottom Wetlands Preserve will host a native plant sale fundraiser. Visitors will discover common and hard-to-find plants in a variety of sizes, plus perennials, shrubs and trees. The sale runs 9 a.m. to 3 p.m. April 18 at Jackson Bottom Wetlands, 2600 S.W. Hillsboro Highway, Hillsboro.

Tualatin Hills Park & Recreation will offer trees, shrubs and flowering plants during this year's native plant sale. The sale will be from 10 a.m. to 2 p.m. April



Theresa Myers/Staff/2014

Once a sword fern has established itself in a garden area, it will spread and fill in as a ground cover.

25 at Tualatin Hills Nature Center, 15655 S.W. Millikan Way, Beaverton. Proceeds will benefit park improvements and education programs.

Washington County Master Gardeners will hold its annual plant sale from 9 a.m. to 2:30 p.m. April 25 at the Hillsboro Armory, 848 N.E. 28th Ave. Natives, shrubs, herbs, berries, trees and drought-tolerant plants are included. Perennials and annuals used for shade and sun are \$5 per gallon.

Friends of the Tualatin River National Wildlife Refuge will sponsor their annual native plant sale from 9 a.m. to 3 p.m. April 25 at the refuge, 19255

S.W. Pacific Highway, Sherwood. Plants will be furnished by Bosky Dell Natives of West Linn, and include wood violets, wild ginger, starry sedum, penstemon, huckleberry, mock orange and low Oregon grape. **Tualatin Valley Garden Club** will partner with the **Tualatin Valley Chapter of the American Rhododendron Society** to hold their 52nd annual plant sale 8:30 a.m. to 5 p.m. April 25 and 10 a.m. to 4 p.m. April 26. Site is the Washington County Fair Complex (east entrance), 873 N.E. 34th Ave., Hillsboro. The sale will showcase landscape plants, vegetables (especially

tomatoes) and herbs.

Cedar Mill Garden Club 12th Annual Plant Sale & Garden Art Fair is set for 9 a.m. to 5 p.m. May 9 at Cedar Mill Bible Church, 12208 N.W. Cornell Road (in the lower parking lot next to the John Quincy Adams Young House). The sale includes perennials, bi-annuals, herbs and succulents, plus plants for sun and shade. Proceeds will benefit scholarship and garden-related projects.

Portland Timbers expand Beaverton practice center

The Portland Timbers expanded its Beaverton practice facility to make room for more members of its soccer-playing family.

The new space at the Adidas Timbers Training Center includes locker rooms, training areas and office space as well as additional field time to serve the Timbers, Portland Thorns, Timbers Academy, the U-23s and T2 teams, according to Tualatin Hills Park & Recreation District.

The expansion is part of a 10-year agreement with THPRD, which owns the land and leases the field and building space to the Timbers.

The Timbers paid for the 2,600-foot addition to the

\$6 million Adidas Timbers Training Center, where the team has practiced since 2012.

According to the Timbers website, the training center is the primary on-field training ground for the Major League Soccer club. It complements the training and fitness facilities at Providence Park where the Thorns also practice.

The training center has a natural-grass field to be used exclusively by the Timbers teams and a synthetic turf field designated for public use.

As part of the agreement, the Timbers make an annual donation to the Tualatin Hills Park Foundation and conduct annual youth soccer camps

and coaches' clinics at the Adidas Timbers Training Center.

The expansion adds to the 6,000-square-foot indoor training facility already on the site, which is located at THPRD's Fanno Creek Service Center near Oregon 217 and south of Southwest Allen Boulevard.

THPRD acquired the 90,000-square-foot service center and more than 13 acres in 2010. A former Frito-Lay processing facility, THPRD paid \$8.7 million for the facility and construction costs. It houses the district's maintenance operations, planning and development and natural resources departments.

— Wendy Owen

Octogenarian fights increases in rec fees

By Wendy Owen
The Oregonian/OregonLive

Earl Egan has become a thorn in the side of the Tualatin Hills Park & Recreation District.

The 86-year-old is angry that the park district increased its fees for senior citizens, and he has reminded the elected board about that at every public meeting since February.

"Give us old guys a break," he told them.

Egan has plenty of people behind him. People on fixed incomes who rely on exercise to ease their aches and pains, help their balance and otherwise keep them healthy. They've signed a petition.

For many, the size of the increase for aquatics programs jolted them: It jumped nearly 90 percent for a drop-in pass.

"Maybe they could have done it gradually, because it was a shock to a lot of the older people," said Brian Auton, 63.

On Jan. 1, Tualatin Hills reduced its discount for seniors from 25 percent to 20 percent, and it will continue to decline until it reaches 10 percent in two years. In addition, the park district raised the age for seniors from 55 to 58 this year; it will increase to 62 in 2016 and to 65 in 2017.

But it wasn't the discount reduction that bothered the seniors as much as the reconfiguration of Tualatin Hills' fee schedule. Aquatics took the biggest hit.

Like Egan, many of the seniors aren't into Zumba or high-impact fitness classes. They prefer the cool waters and gentle movement of water aerobics classes. Last year they could drop into an aquatics class for \$4. This year it's \$7.50 because the aquatics drop-in was replaced with a "deluxe" drop-in, which opens all activities and classes to the user.

So seniors turned to their 20-punch aquatic fitness pass,

which last year allowed them 20 visits for \$56, or \$2.80 a visit. They could use it whenever they wanted, but that option disappeared under the new configuration. After Egan and others complained, the park district brought it back, for \$75, or \$3.75 a visit.

The 20-visit pass will continue to increase in price over the next three years, reaching about \$180, said Keith Hobson, Tualatin Hills director of business and facilities. "It was being underpriced," he said. Eventually it will be less expensive for them to buy a deluxe pass.

The reconfiguration was meant to standardize the pay structure for everyone and bring in additional revenue to pay for programs and use of the facilities that were not being 100 percent covered under the previous fee structure, Hobson said.

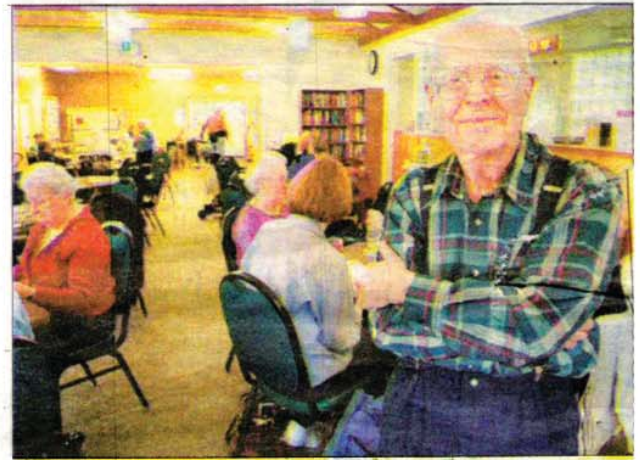
Why fees?

There's a question commonly asked of the park district: "I pay property taxes to Tualatin Hills, why do I have to pay fees?"

Taxes pay for Tualatin Hills operations, such as maintaining buildings, pools, parks and trails. Fees pay for classes and other facility use. The problem for Tualatin Hills is that the fees are not covering the costs, Hobson said. The park district is supplementing them with tax funds, which takes away money that should go toward maintaining the existing facilities.

"Taxes should fund it," Hobson said. "But we're subsidizing the programs that should be fee-supported; that's why we've increased the fees."

Most of the pools and recreation centers are at least 40 years old and in constant need of repairs, he said. The Beaverton Swim Center is 60 years old.



WENDY OWEN/STAFF

Beaverton resident Earl Egan, 86, here at the Tualatin Hills Park & Recreation District's Elsie Stuhr Center, is angry about the jump in fees for seniors to use the district's pools.

"Pools are expensive to operate," said Bob Wayt, park district director of communications and outreach.

The park district is trying out two health care programs, Silver Sneakers and Silver Fit, which may cover the costs of some fitness programs depending on a senior's insurance.

Seniors need exercise

Catherine Carr said she quit Tualatin Hills in February because of the increase in fees. The 62-year-old used to take deep-water aerobics classes at the Conestoga Recreation & Aquatic Center.

"When the prices came out at the beginning of the year we were shocked," Carr said. Like a lot of seniors, she enjoyed Tualatin Hills because of the camaraderie she had with others in her classes. "I don't mind paying a little bit more but I wasn't expecting to pay double."

Others said they may be forced to pay the increased prices.

"I depend on it," said Dagmar Barsch, 78. "I'm afraid if I was pushed, I would spend the money. This is convenient and it's nice to see people that you know."

Egan started going to Tualatin Hills shortly after he had a mild stroke in 2001 that left him with a weakened leg. He uses a cane and relies on the exercise to keep him energized. He works out every day, including aqua aerobics classes two times a week.

"If I miss it, I feel lazy," he said. "It's a blah feeling. That's a bad cycle."

Egan has become a sort of spokesman for the seniors at the Beaverton Swim Center. Having helped win back the 20-visit pass, he is whittling away at the increased cost of the pass.

On March 2 the retired electrical engineer read a statement to the Tualatin Hills board in which he said that a 5 percent increase per year was more logical than the sudden 34 percent increase in the pass.

He noted that the consumer price index has increased 2 percent per year and his Social Security has increased 1.7 percent on average over the past five years. The 5 percent, he said, would bring the pass to \$58.80 this year.

Egan always thanks the district board for "a great and wonderful park district," and mentions that he took his six children to the parks when they were young. But he said he believes the district's priorities have changed and read a portion of its mission statement, which is to "provide high-quality park and recreation facilities, programs, services and natural areas that meet the needs of the diverse communities it serves."

He added, "That community includes us fixed-income Social Security beneficiaries. Please don't ignore us."

wowen@oregonian.com
@bvrtrreporter

Tualatin Hills Park & Recreation District: connecting people, parks and nature

District celebrating its 60th anniversary of dedicated service

by Bob Wayt, THPRD

For most public agencies, March 4, 2015 was just another date. Not for the Tualatin Hills Park & Recreation District. Sixty years ago on that date, voters in the Beaverton area approved a taxing structure for the district, and THPRD was officially born. The vote capped a two-year campaign led by local physical education instructor Elsie Stuhr and other citizens who foresaw growth in the area and the need for park and recreation services. Two years later, in 1957, the district opened its first facility, the Beaverton Swim Center, which is still in use today next to Beaverton High School.

From those humble beginnings, THPRD has grown to encompass 50 square miles. The park district includes not only the City of Beaverton but many unincorporated areas of Washington County that are adjacent to it: Aloha, Bethany, Cedar Mill and Raleigh Hills, to name a few.

The population within those boundaries is 230,000. It is one of the most ethnically diverse areas in Oregon, and THPRD embraces the opportunity, offering something for everyone.

Fun, after all, is a universal language.

The district provides year-round recreational opportunities for people of all ages and abilities. Offerings include thousands of widely diverse classes, more than 90 park sites with active recreational amenities, 60 miles of trails, eight swim centers, six recreation centers, and 1,400 acres



Elsie Stuhr (third from left) joins with other THPRD pioneers to break ground for the district's first facility, the Beaverton Swim Center.

of natural areas. "Our success has been built on a supportive community and a commitment to provide a wide variety of high-quality park and recreational services that meet the needs of our residents," said Doug

Menke, THPRD general manager. "By design, the district started very small, proved itself to voters, and grew gradually into what it is today: the envy of many communities." Throughout the remainder of

2015, the 60th anniversary celebration will be woven into an assortment of district communications, activities and events. For example, when registration for spring classes began on March 7, registrants were invited to enter a drawing. Five lucky winners each received a \$60 THPRD gift card. "It's going to be a fun year," Menke said. "We invite our patrons to join us in the celebration."

For more information about the park district, visit www.thprd.org or call 503-645-6433.





SUBMITTED PHOTO

The Spring Egg Hunt will again take place at the Garden Home Recreation Center. The Tualatin Hills Park & Recreation District and Beaverton Police Department host this event.

Egg hunts in Beaverton, Sherwood and Tualatin

Easter activities open to the public

By ERIC APALATEGUI
The Times

The following egg hunts and Easter-related family activities in eastern Washington County were reported to the Times newspapers.

Beaverton Area

Underwater Egg Hunt

What: In the 17th annual version of this event, prized eggs can be found at the bottom of swimming pools. There also will be a bounce house, Bunny Bingo,

a coloring contest, a bunny cake walk and a photo booth. **When:** 6:30-8:30 p.m. Friday, April 3. **Where:** Conestoga Recreation & Aquatic Center, 9985 S.W. 125th Ave. **Who:** children ages 6 months-13 years. **Cost:** \$7. **Details:** 503-645-6433 or thprd.org.

Artisan Bazaar and Egg Hunt

What: The fourth annual event is presented by the Beaverton Police Department. It includes a pancake breakfast with bunny, egg hunts and a bazaar featuring local craft and food vendors. **When:** 9 a.m.-1 p.m. Saturday, April 4. **Where:** Cedar Hills Recreation Center, 11640 S.W. Park Way. **Who:** Ages 0-3 for 10 a.m. parent and child hunts, ages 4-9 at 11 a.m., all ages

for other events. **Cost:** \$7 for hunts; \$3-5 for breakfast. **Details:** 503-645-6433 or thprd.org.

Spring Egg Hunt

What: This outdoor egg hunt will be held rain or shine and there will be prizes for finding specially marked eggs. Other activities include photos with bunny, doughnuts and hot chocolate. **When:** 10:30 a.m.-noon (age-based hunts begin at 11) Saturday, April 4. **Where:** Garden Home Recreation Center, 7475 S.W. Oleson Road. **Who:** Ages 1-10. **Cost:** \$7. **Details:** 503-645-6433 or thprd.org.